

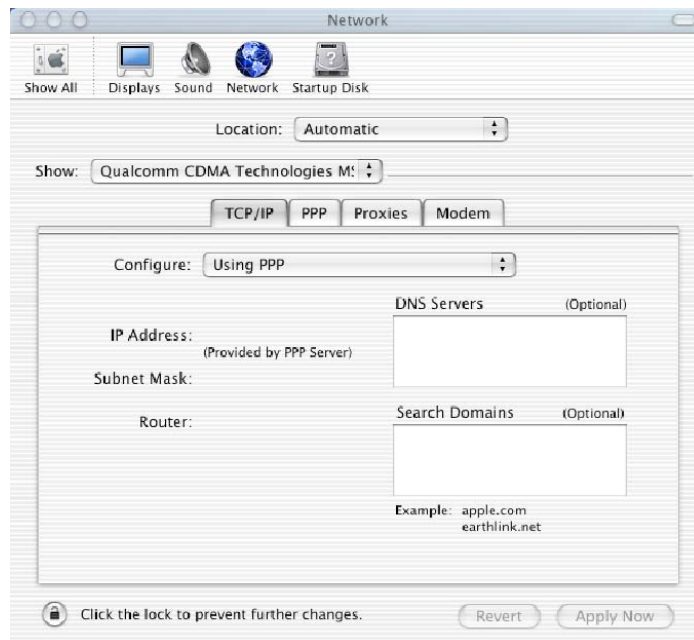
Quick installer guide



a. Connect the modem to the PC, and the following window will appear:



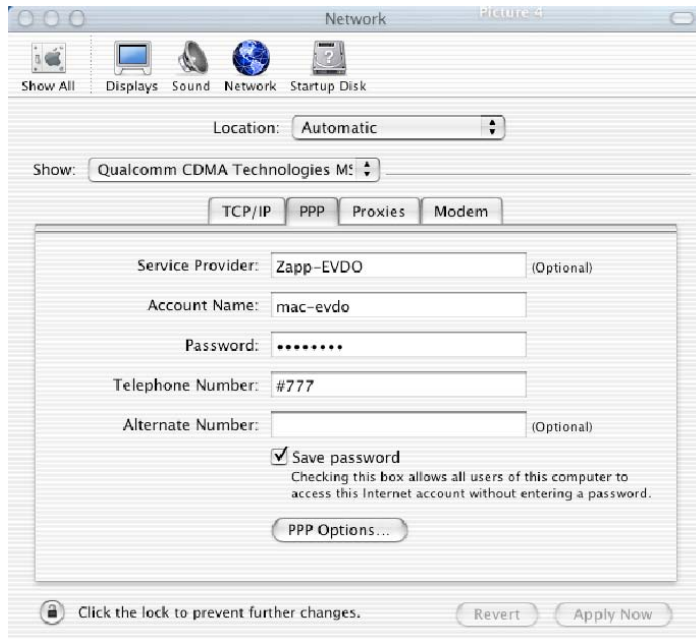
b. Press "OK" and access the "Network" window:



c. Setup the following options:

- **Location:** *Automatic*
- **Show:** *Qualcomm CDMA Technologies MSM* (modemul Z010 trebuie sa fie conectat)
- **TCP/IP Configure:** *Using PPP*

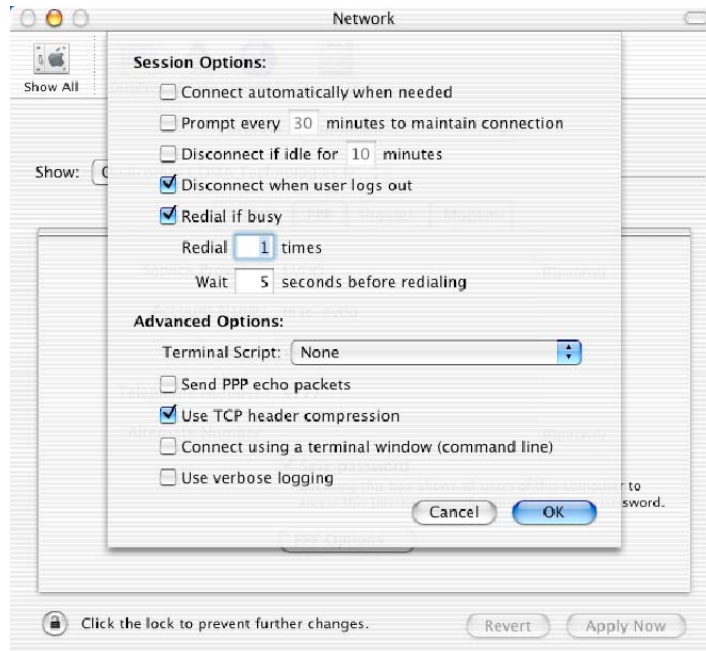
d. Select “PPP” and the following window will appear:



e. Here, make the following settings:

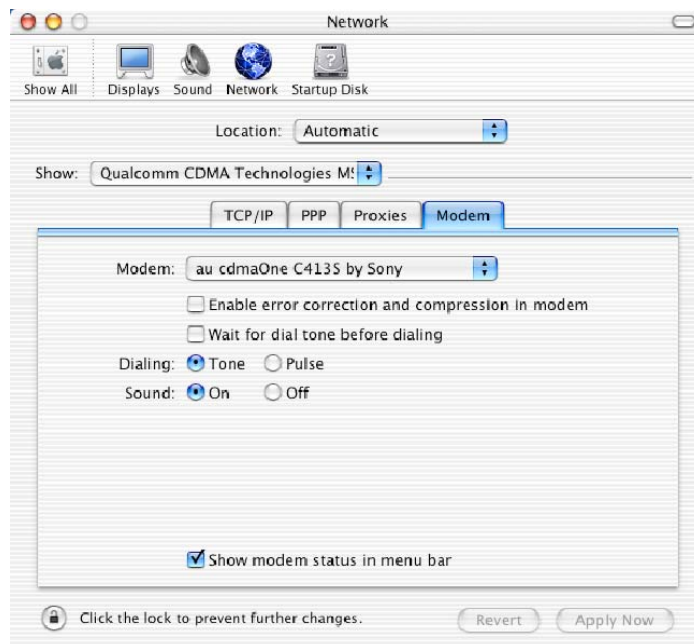
- **Service Provider:** *Zapp-EVDO*
- **Account Name:** *mac-evdo*
- **Password:** *oricare* (mac-evdo)
- **Telephone number:** *#777*
- **Save Password:** *bifată*

f. Access “PPP Options” and this window will be shown:



g. Make shure that the settings are made as shown in the window above, and then press “OK”.

h. Access “Modem” and this window will show up:



i. In this window make the following settings:

- **Modem:** *au cdmaOne C413S by Sony*
- **Wait for dial tone before dialing:** *debifat*

For the new settings to become active, press **“Apply Now”**:



j. In the menu bar select the “Handset” icon and this window will appear:



k. Make sure the the Qualcomm CDMA Technologies MSM modem is checked, and press “Connect”.