

Installation Guide

H-100 / Windows98 / Serial Cable + USB to Serial adapter (by ATEN)

Handset:	1
Cables.....	1
Modem installation.....	2
Dial Up Configuration.....	6



Handset:

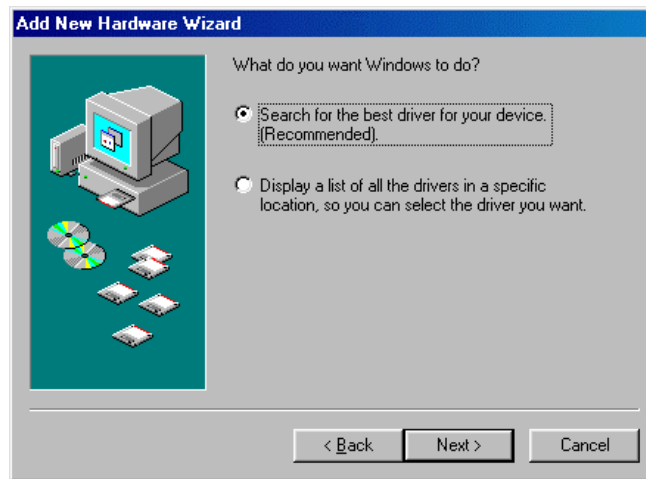
press menu;
press 7;
press 3 ;
select 230400 using up/down arrows

Cables

Connect the Handset to Serial Cable. Connect The Serial Cable to USB Adapter (by ATEN). Plug the USB end to PC.
The Operating System will launch "Found New Hardware Wizard".



Click Next

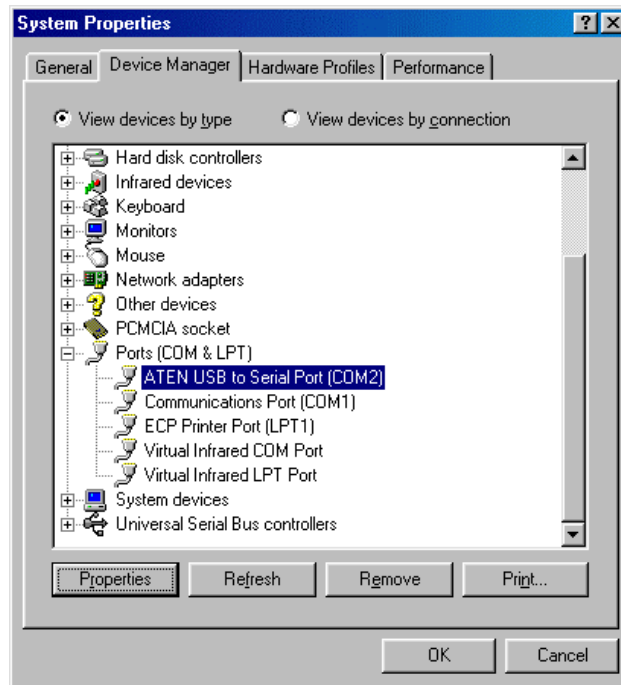


Search for the best driver for your device.

Specify a location.

Note: USB Adapter (by ATEN) is delivered with it's own drivers (Floppy or CD).

If the installation is successful you shall see a new COM port in Device Manager
My Computer > Control Panel > System > Device Manager > Ports (COM & LPT)



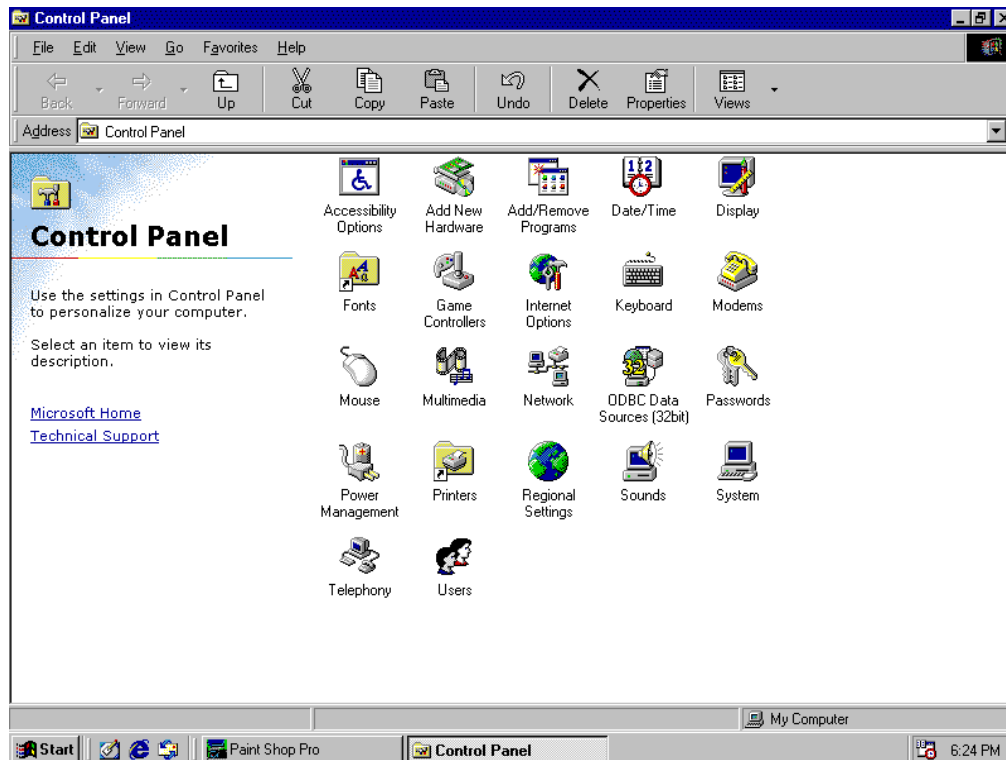
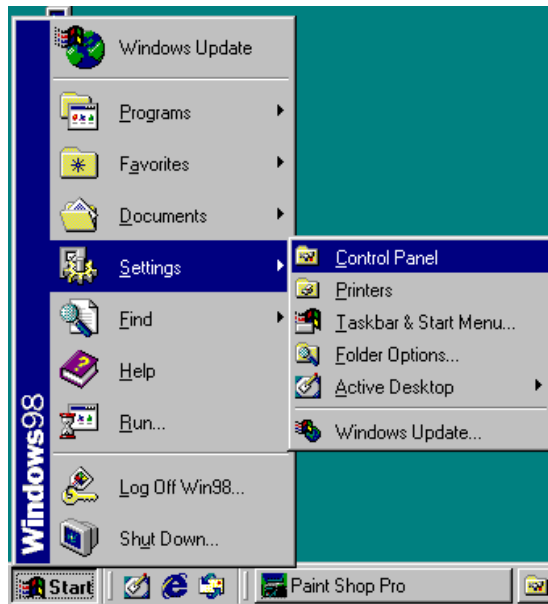
ATEN USB to Serial Port (COM*)

Modem installation

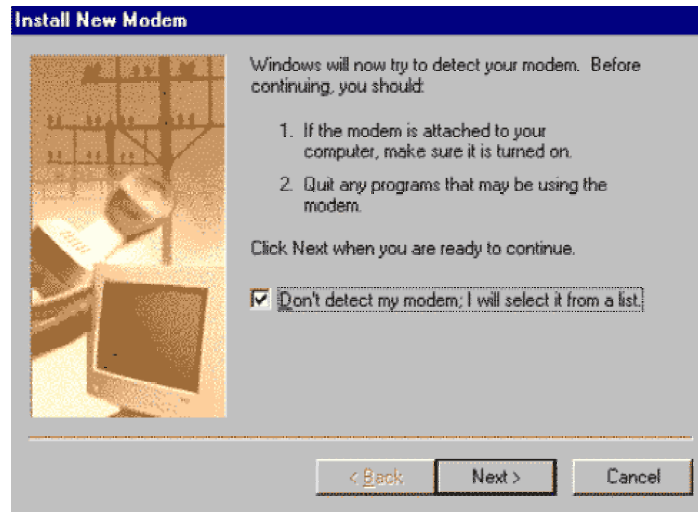
Note: the H-100 is equipped with a built-in modem, which means you don't need to buy a modem if you want to connect to Internet using a dial-up connection. For this reason, the PC/laptop needs to be set-up in a similar scenario

as an external modem set-up. This paragraph will guide you through the steps you need to follow in order to get this modem installed.

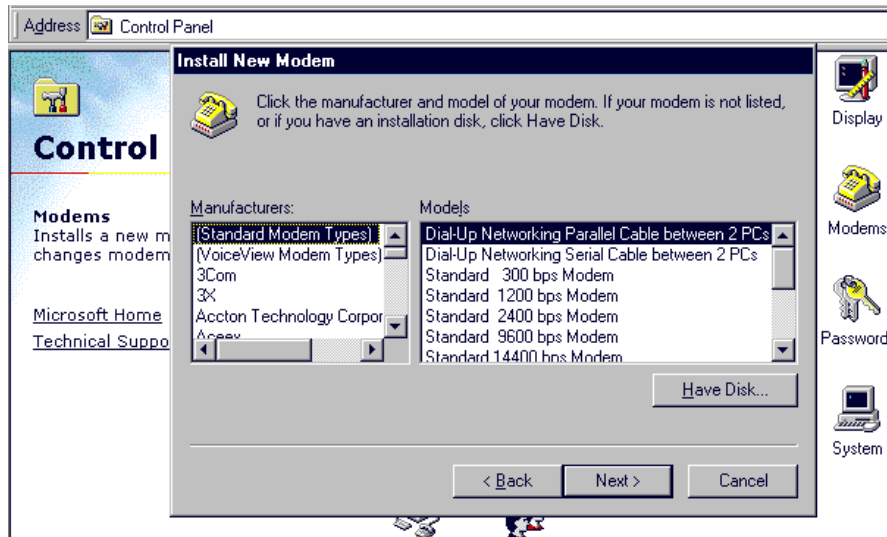
After you closed all your running applications (recommended), click the Windows Start button and go to Control Panel.



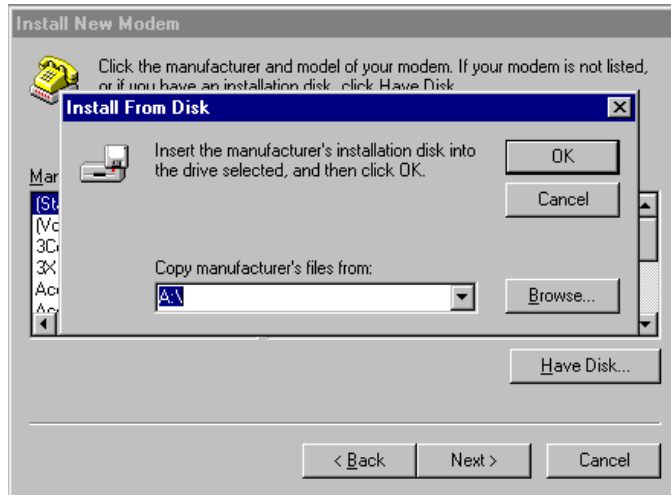
Double click "Modems" icon within the Control Panel
Press Add New Modem



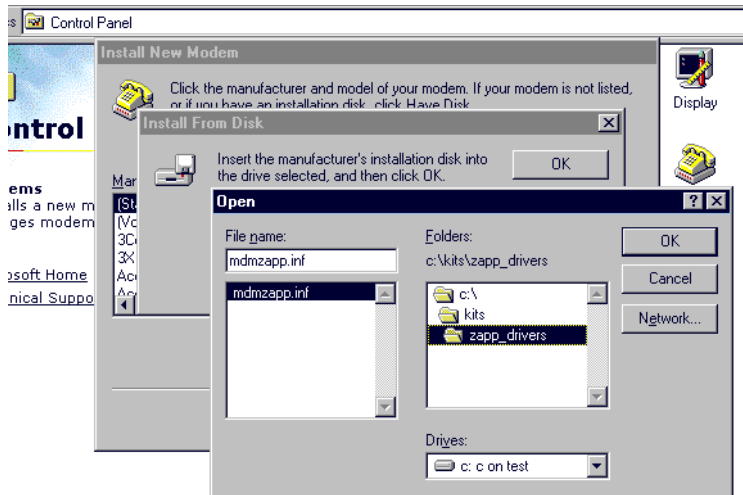
Click the check box named "Don't detect my modem; I will select it from a list"; click next;



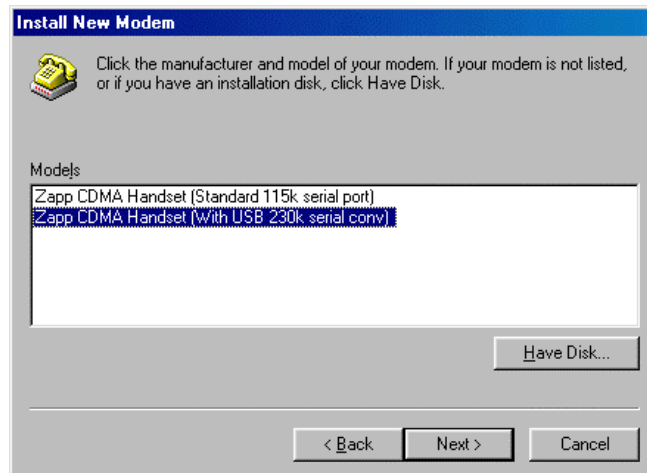
Click: Have Disk



Browse to the location where your Zapp CDMA Hyundai H-100 modem driver is located (we recommend to keep the Zapp driver in a special folder like c:\drivers\zapp_drivers)



Select Zapp CDMA Handset (With USB 230k serial conv.) model



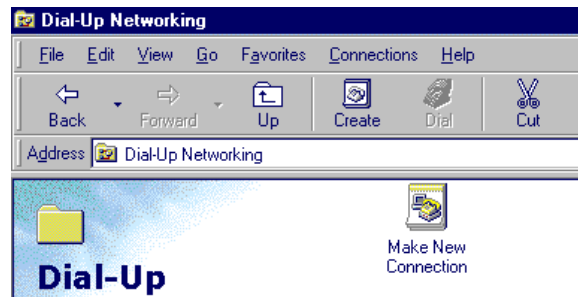
Click next

Select the proper communication port (example: COM2) to which your CDMA device is connected.

Dial Up Configuration

Open My Computer

Open Dial Up Networking

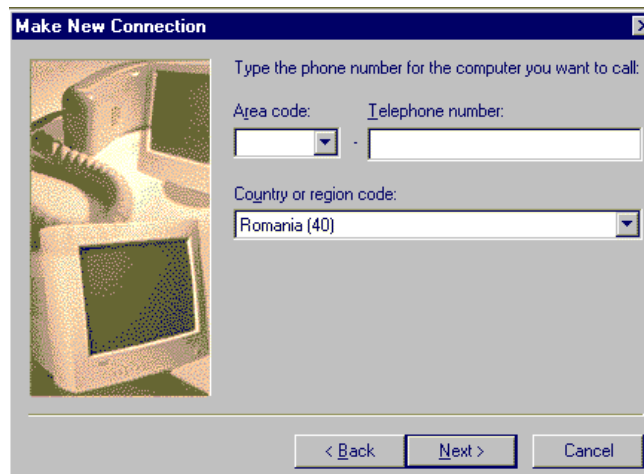


Make New Connection

Type a name for the connection (like "ZappMobile")

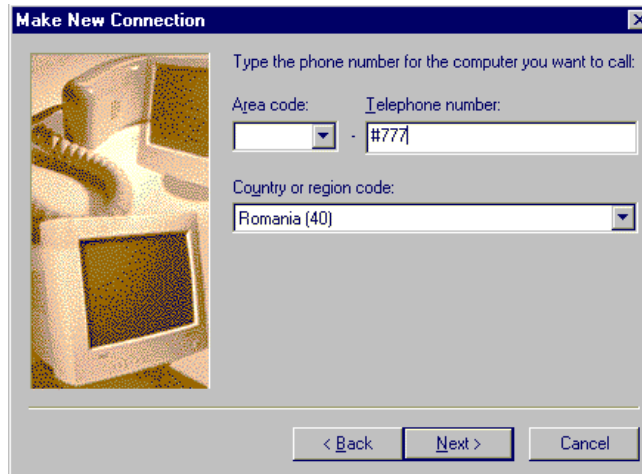
Modem – Zapp CDMA Handset (With USB 230k serial conv)

Click Next

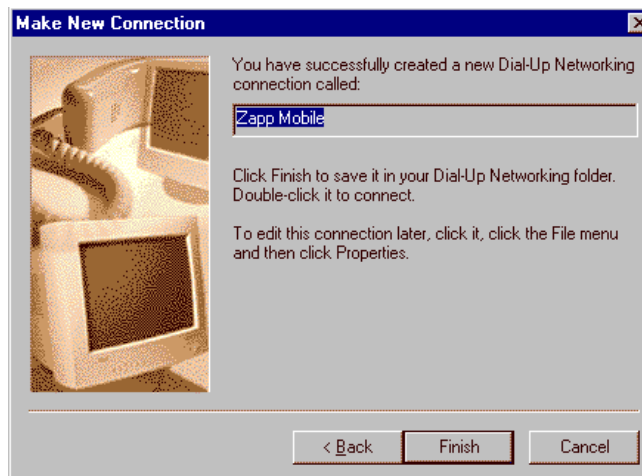


Enter the Telephone number: #777

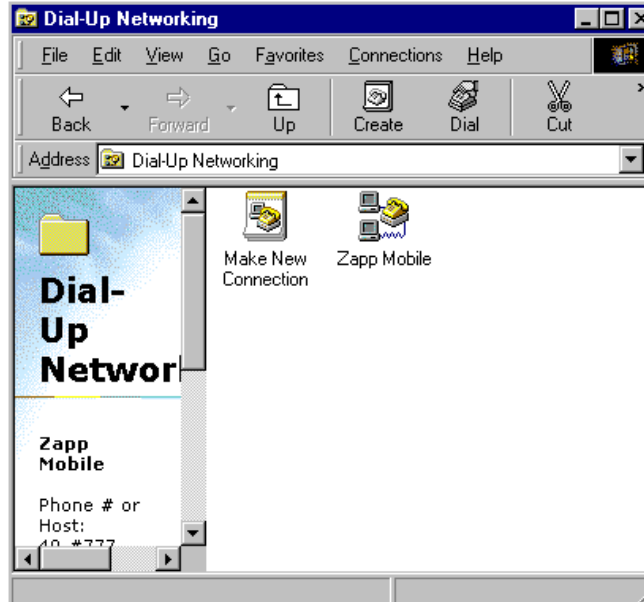
Select country or region code: Romania (40)



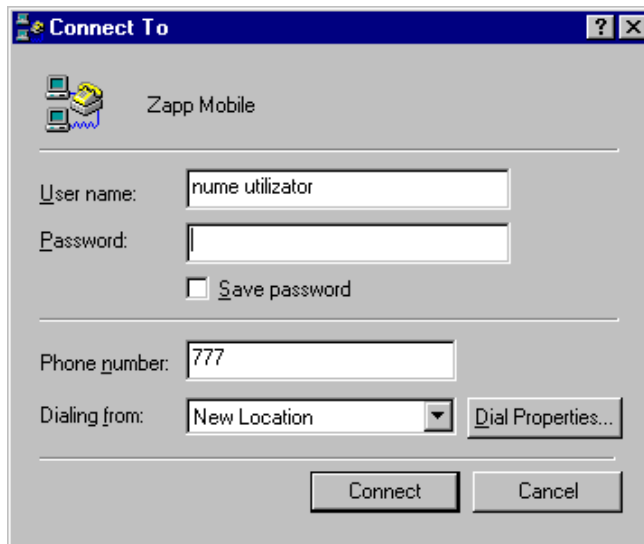
Click next



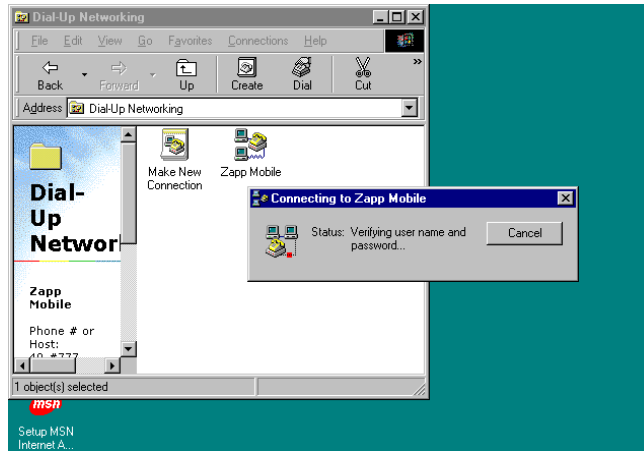
Click Finish.



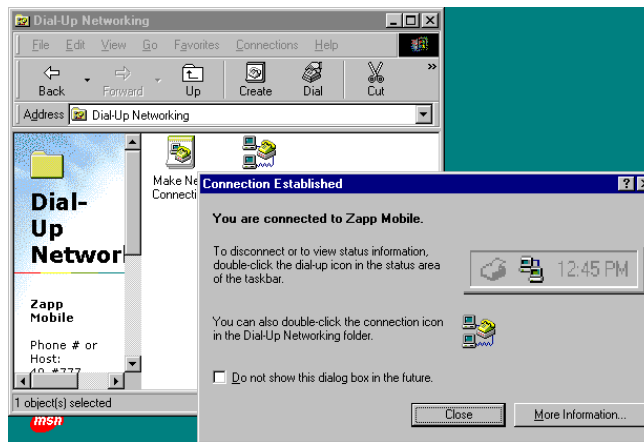
Double click the connection you have just made (example: Zapp Mobile)



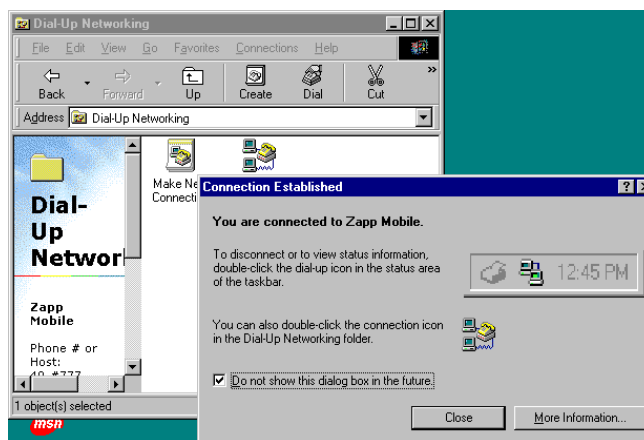
Enter any username. The Password field has no importance for the time being. Click connect. It takes a few seconds until the computer shall be connected.



When connected you may see this message



(you may choose not to see this message in the future)



When connection is established you shall see the following icon in the lower right corner of the screen.

