

Installation Guide

H-100 / Windows98 / Serial Cable

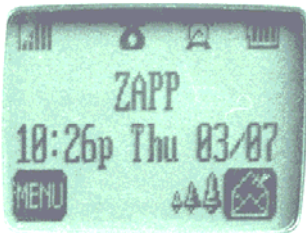
Handset Setup.....	1
Modem installation.....	2
Dial Up Configuration.....	6



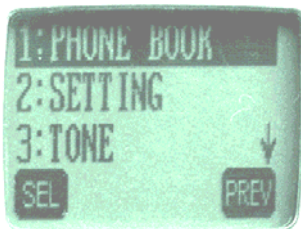
The RS-232 end will be connected to the serial port of your computer



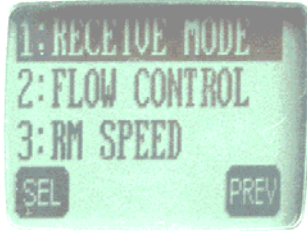
Handset Setup



press menu;



press 7;



press 3 ;



select 115200 using up/down arrows

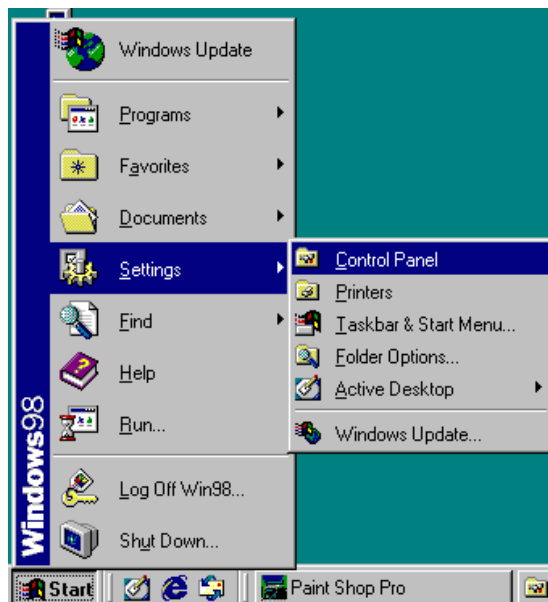
Note: the serial cable, due to manufacturing purposes, limits the data transfer speed1 at 115.2 kbps.

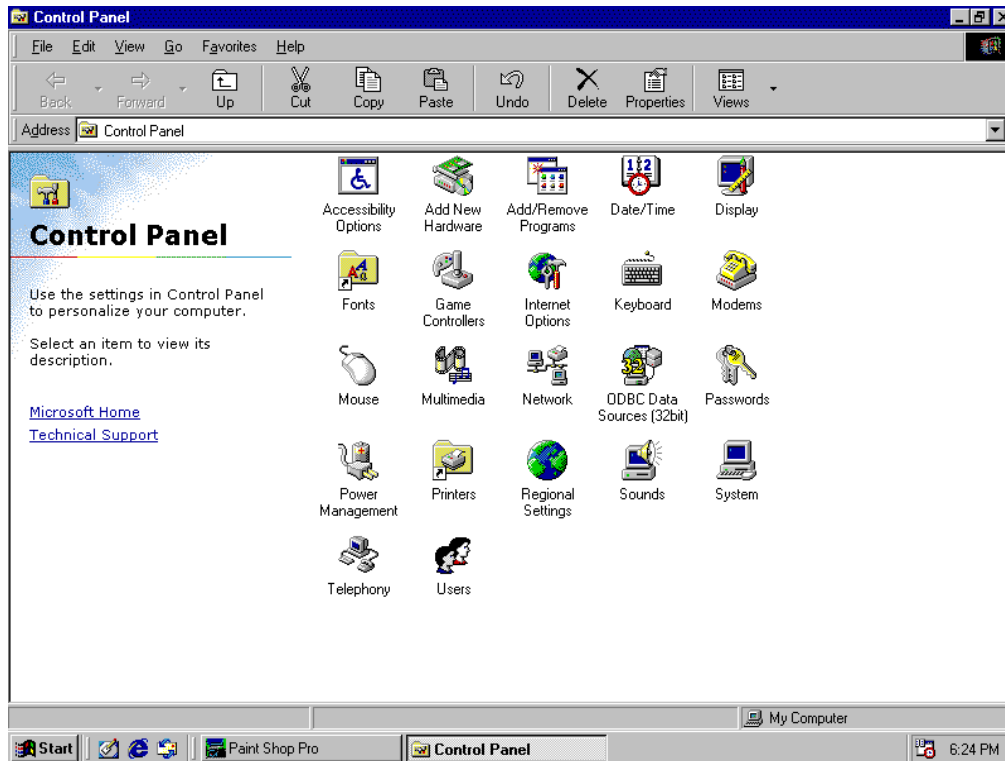
For reaching higher data transfer speed an USB to serial adapter* should be used (see scenario H-100 / win98 / USB).

Modem installation

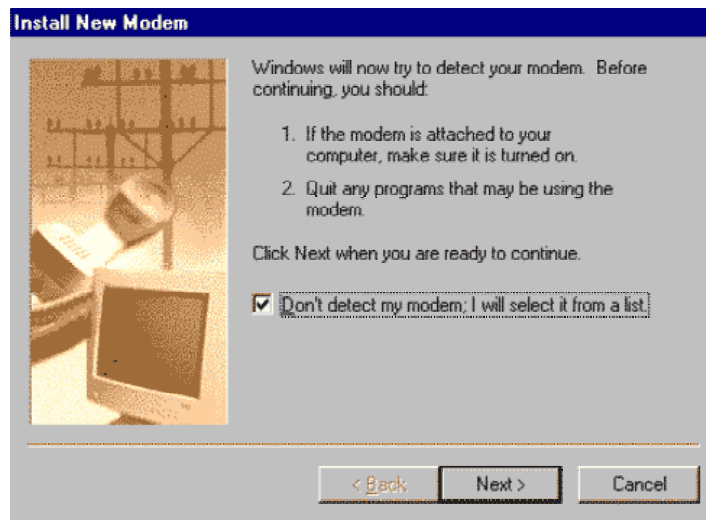
Note: the H-100 is equipped with a built-in modem, which means you don't need to buy a modem if you want to connect to Internet using a dial-up connection. For this reason, the PC/laptop needs to be set-up in a similar scenario as an external modem set-up. This paragraph will guide you through the steps you need to follow in order to get this modem installed.

After you closed all your running applications (recommended), click the Windows Start button and go to Control Panel.

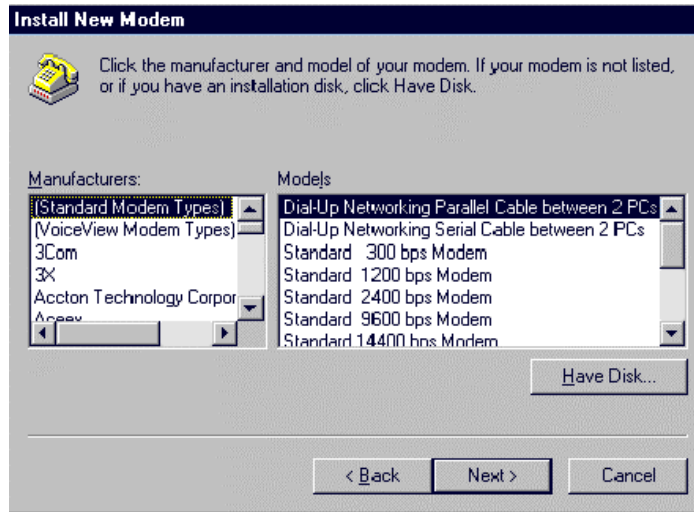




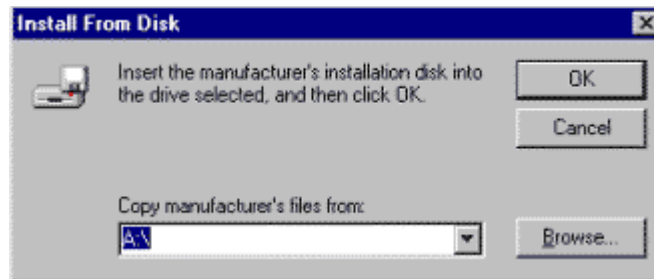
Double click "Modems" icon within the Control Panel
Press Add New Modem



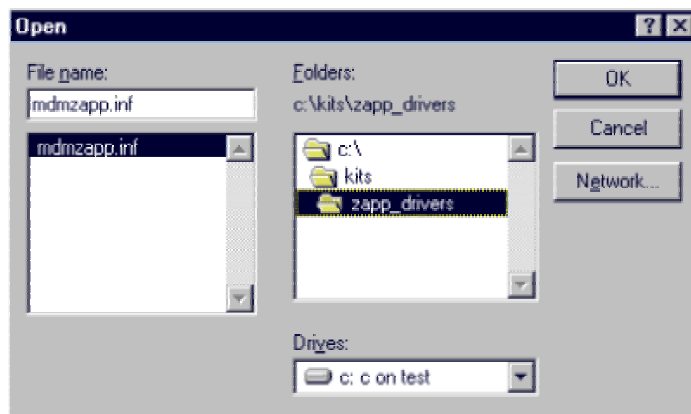
Click the check box named "Don't detect my modem; I will select it from a list"; click next;



Click: Have Disk



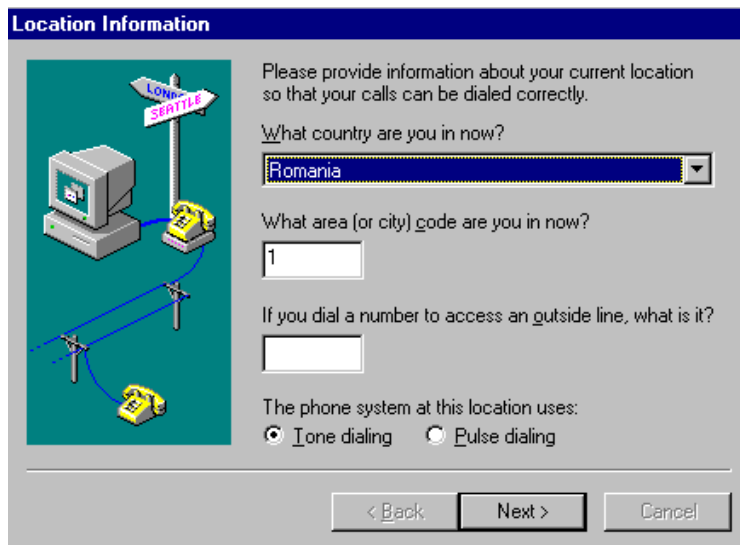
Browse to the location where your Zapp CDMA Hyundai H-100 modem driver is located (we recommend to keep the Zapp driver in a special folder like c:\drivers\zapp_drivers)



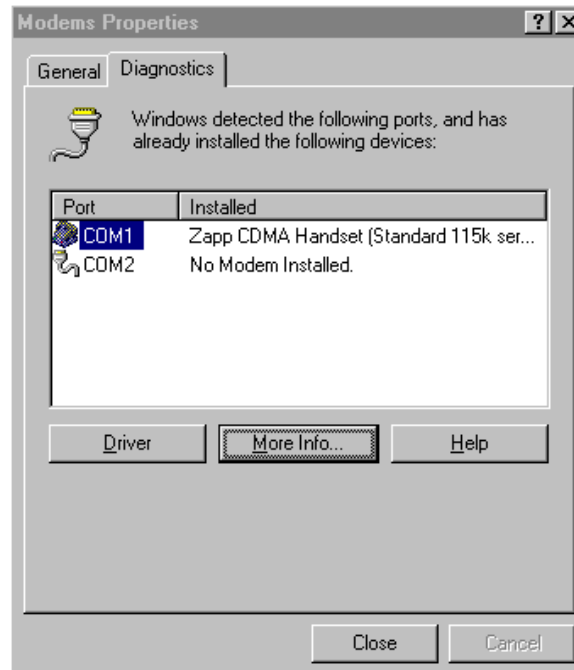
Select Zapp CDMA Handset (Standard 115k serial port) model



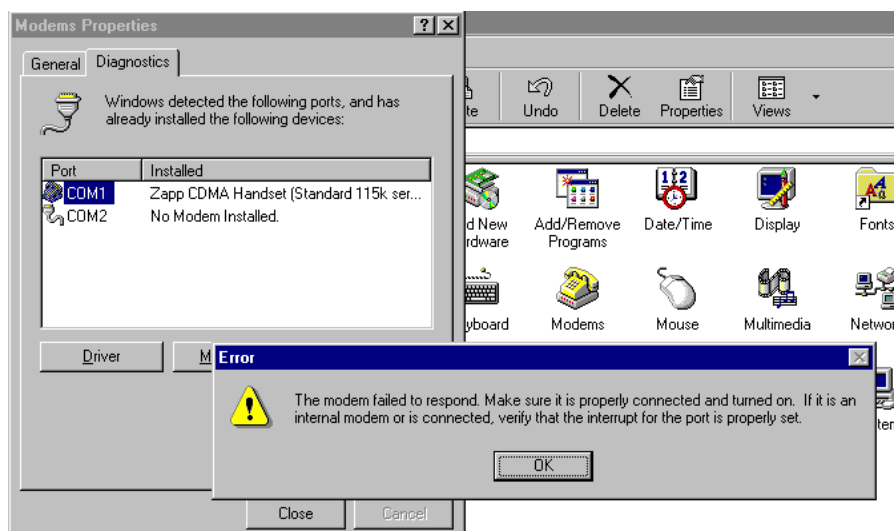
Click next



Select the proper communication port (example: COM1) to which your CDMA device is connected.

**Note:**

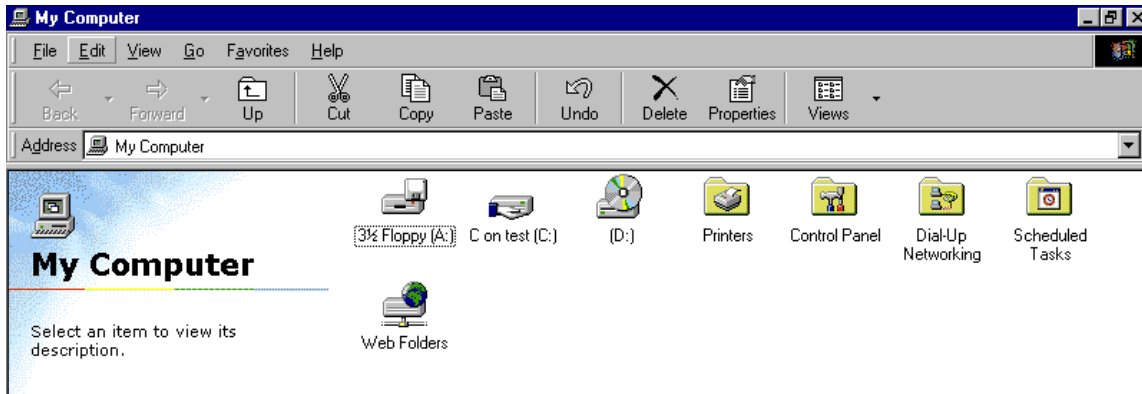
In Windows98 environment the modem test (Diagnostics, More info) returns the following message:



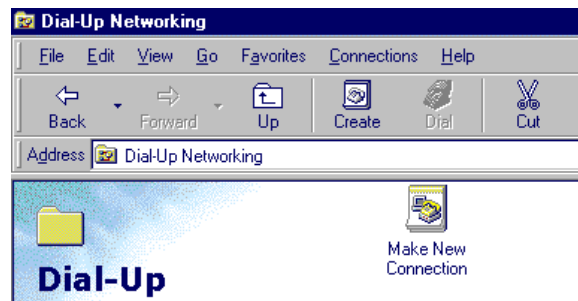
This doesn't mean that the modem is not proper installed.

Dial Up Configuration

Open My Computer



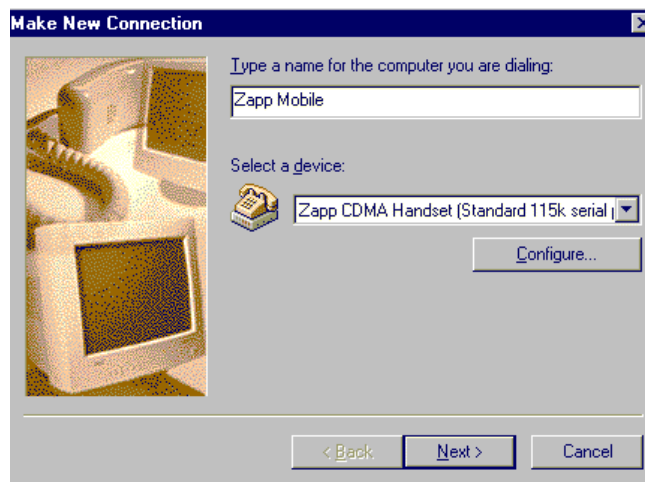
Open Dial Up Networking



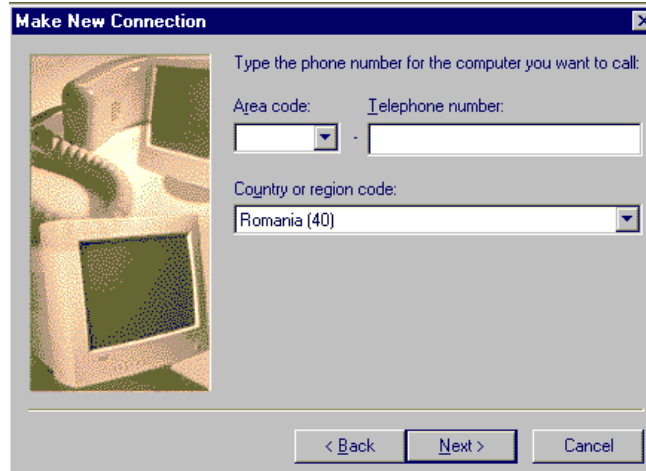
Make New Connection

Type a name for the connection (like "ZappMobile")

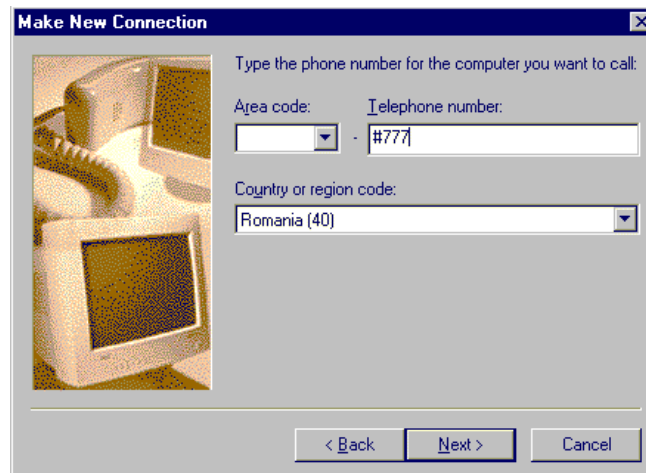
Select Zapp CDMA Handset (Standard 115k serial).



Click Next



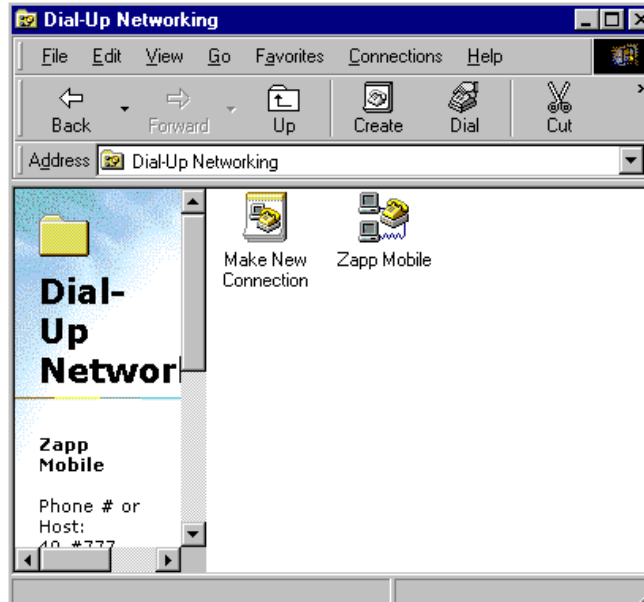
Enter the Telephone number: #777
Select country or region code: Romania (40)



Click next



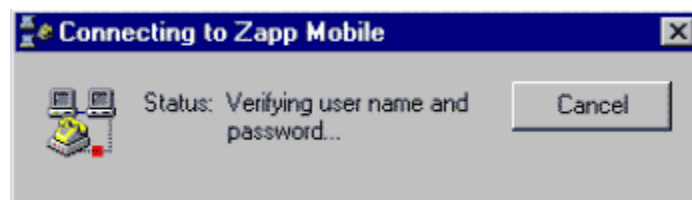
Click Finish.



Double click the connection you have just made (example: Zapp Mobile)



Enter any username. The Password field has no importance for the time being. Click connect. It takes a few seconds until the computer shall be connected.



When connection is established you shall see the following icon in the lower right corner of the screen.



You have now successfully connected to Internet.