

## Installation Guide

H100 / Windows XP / USB Direct (by Prolific) / Zapp driver

Handset setup.....	1
USB Cable installation.....	1
Modem installation.....	4
Establish a dial-up connection.....	9



Connect your Handset to the PC using the USB Direct cable (by Prolific)

### **Handset setup**

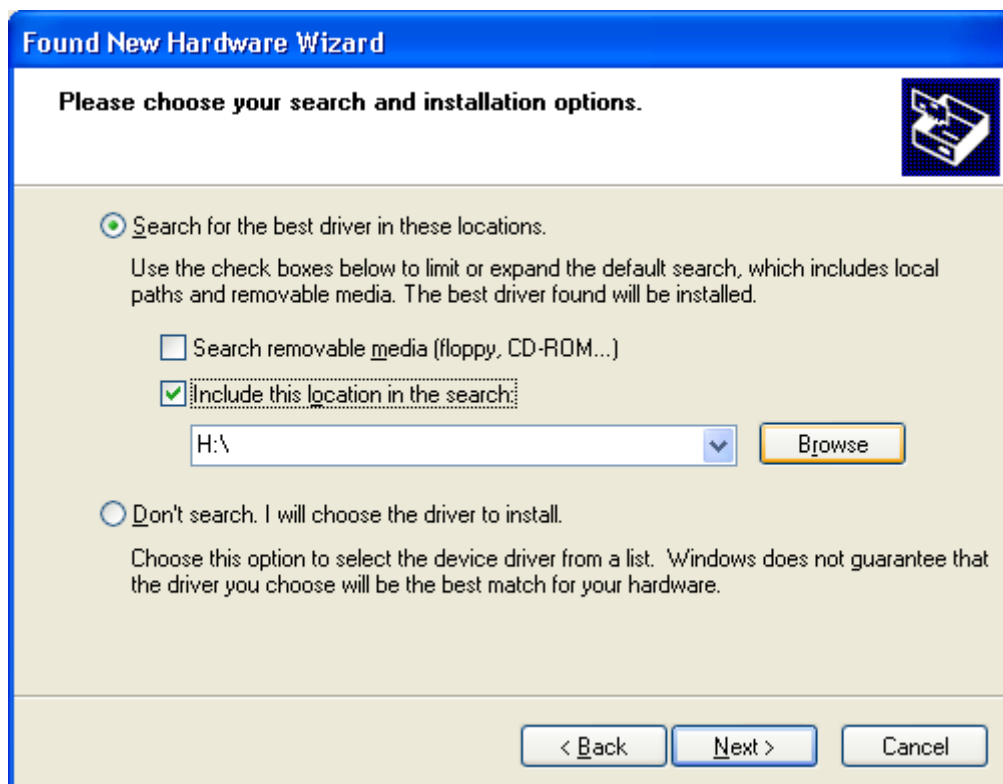
Select RM Speed for H-100 Handset:  
press menu; you will see the next screen:  
press 7; you will see the next screen:  
press 3  
select 230400 using up/down arrows

### **USB Cable installation**

USB Cable requires a driver installation.  
When you plug for the first time the USB cable into PC, you shall see this message: found new Hardware / USB Device)  
Followed by New Hardware Wizard window



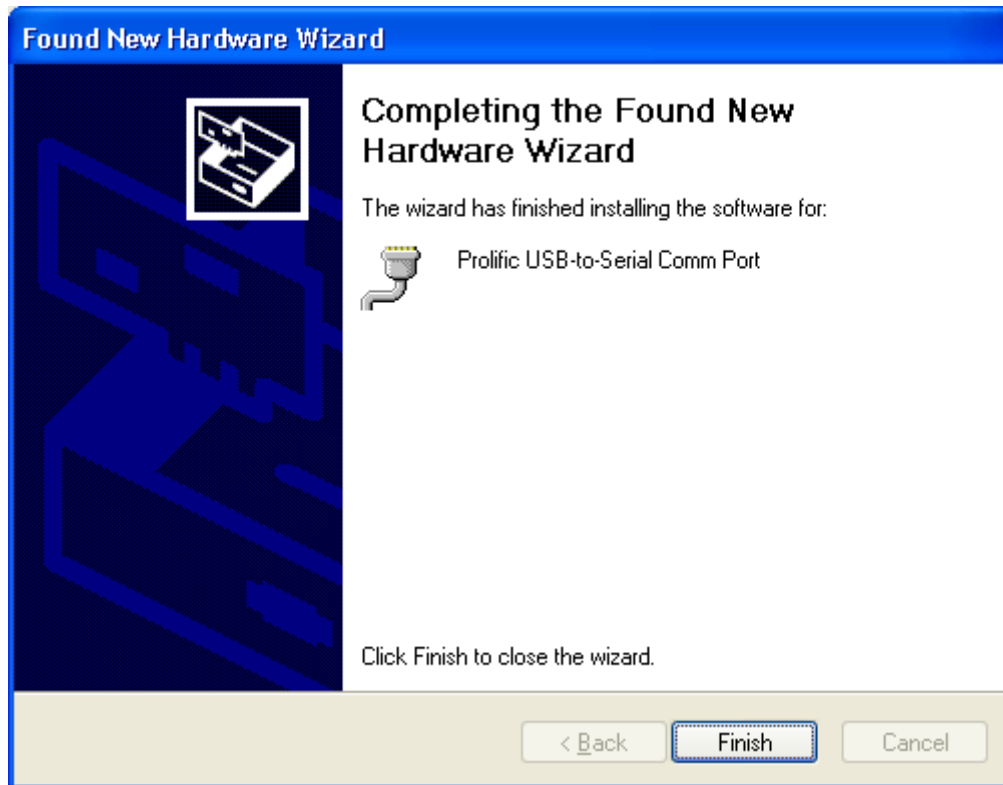
Select "Install from a list or specific location (Advanced)"  
Click Next  
Search for the best driver in these locations



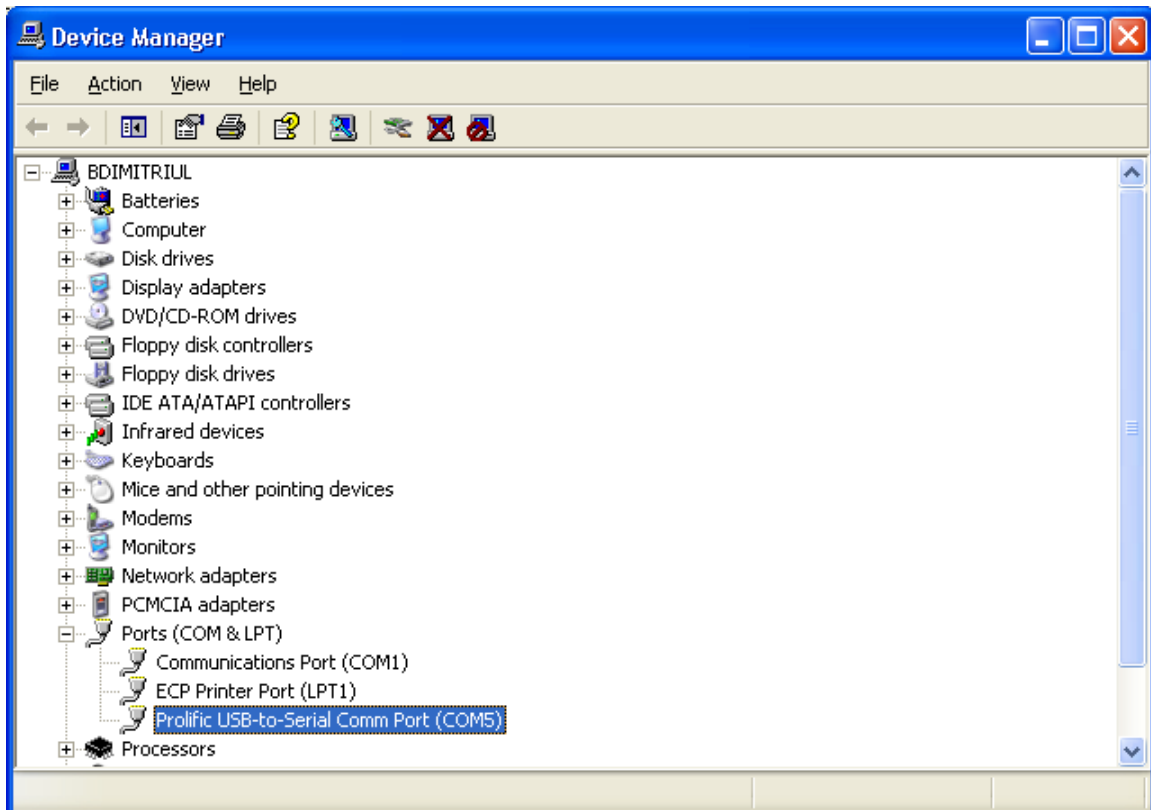
Browse for Folder that includes USB Direct Cable (by Prolific) driver for WinXP



Click OK and Finish

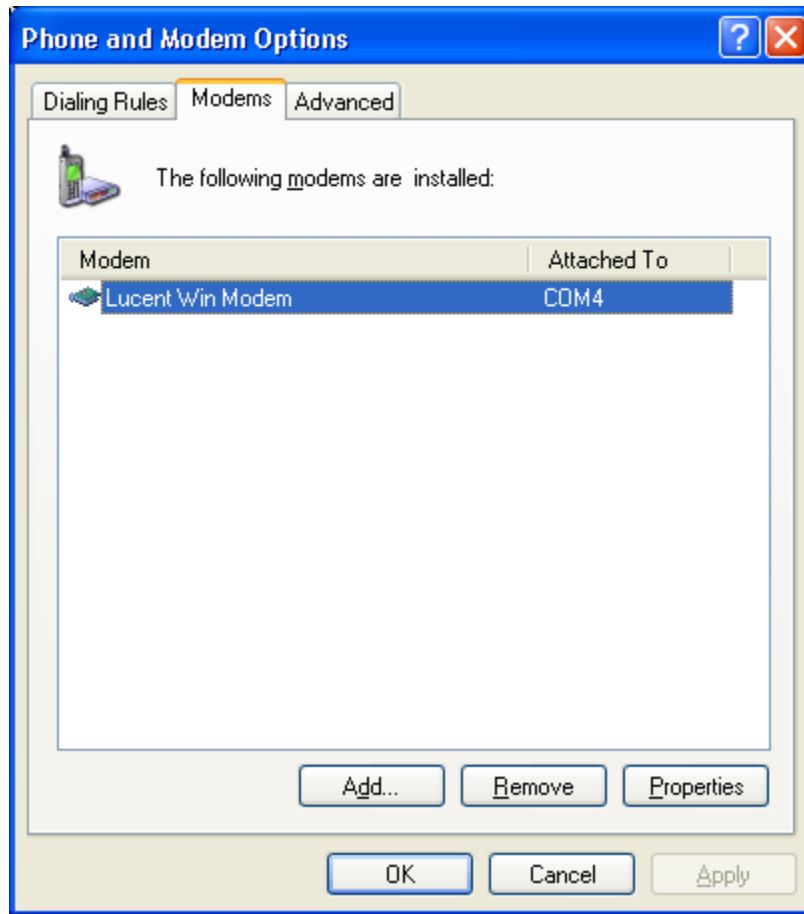


As a result, you will find a new COM port in My Computer > Control Panel > System > Device Manager

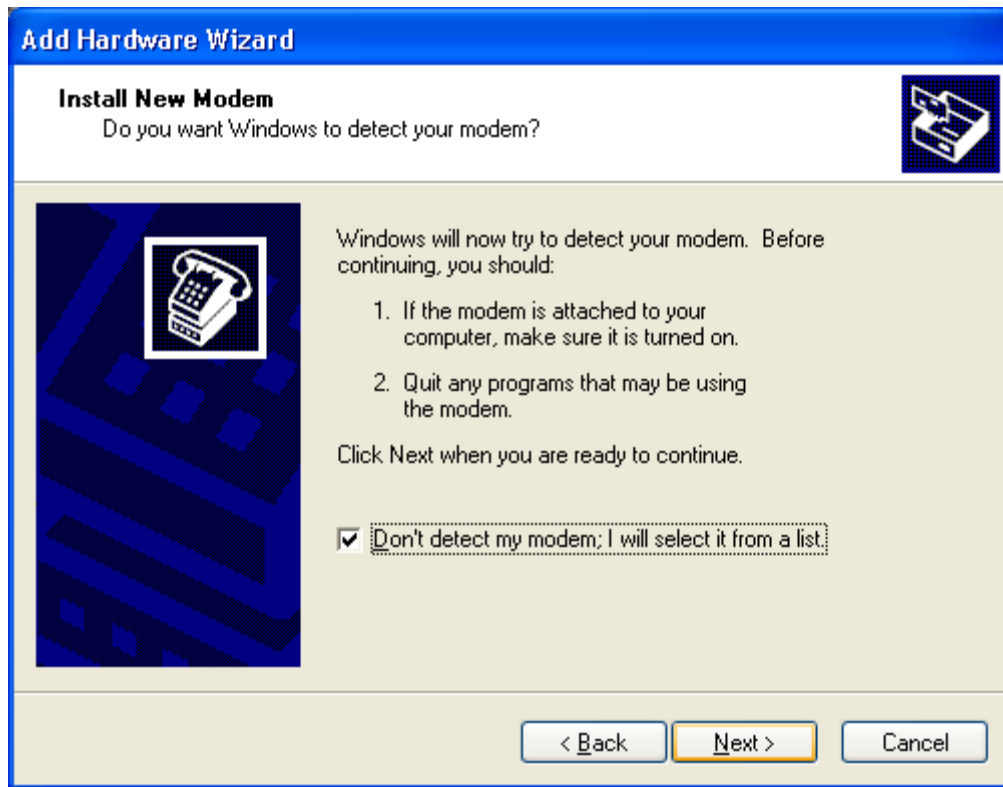


## **Modem installation**

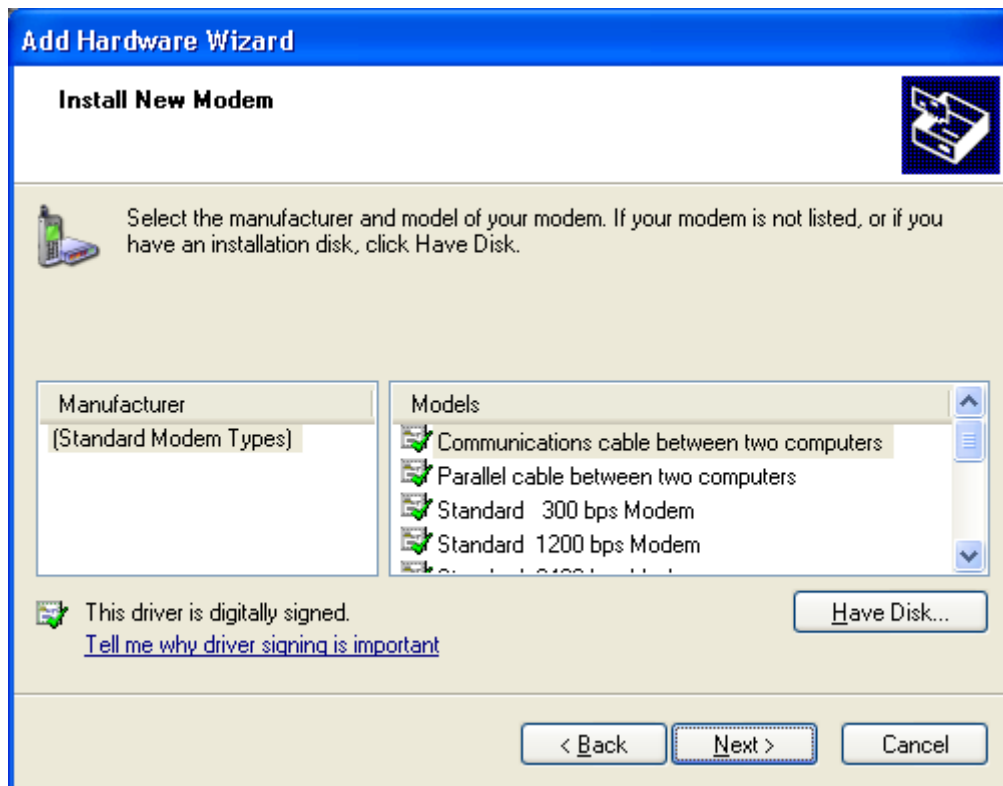
Click the Windows Start button  
and go to Control Panel.  
Double click "Phone and Modem Options" icon from the Control Panel  
press "Modems" tab;  
Click Add



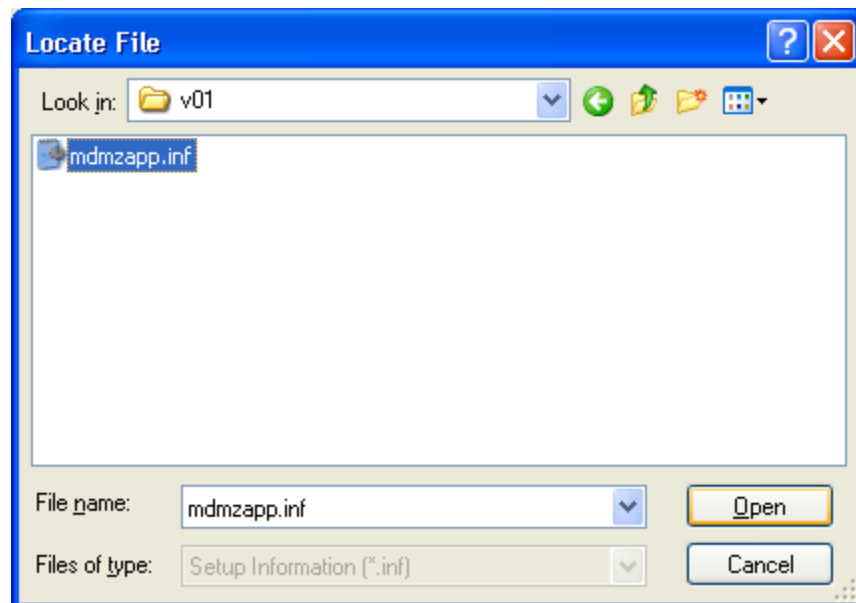
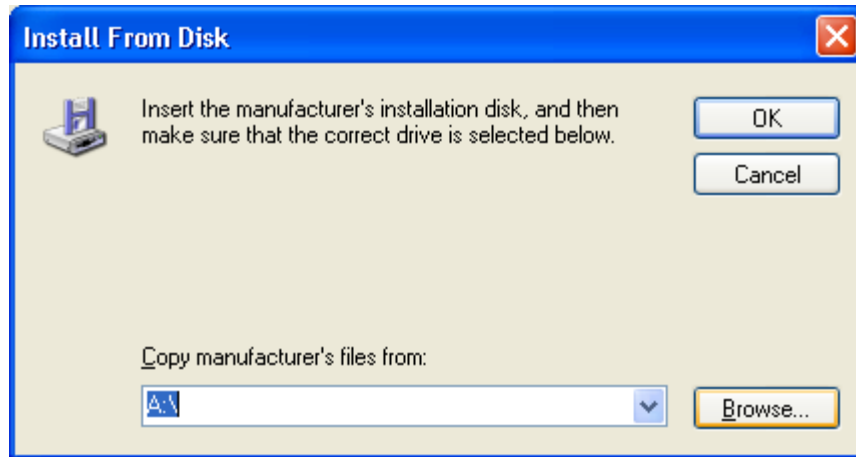
Select "Don't detect my modem; I will select it from a list"  
Click Next



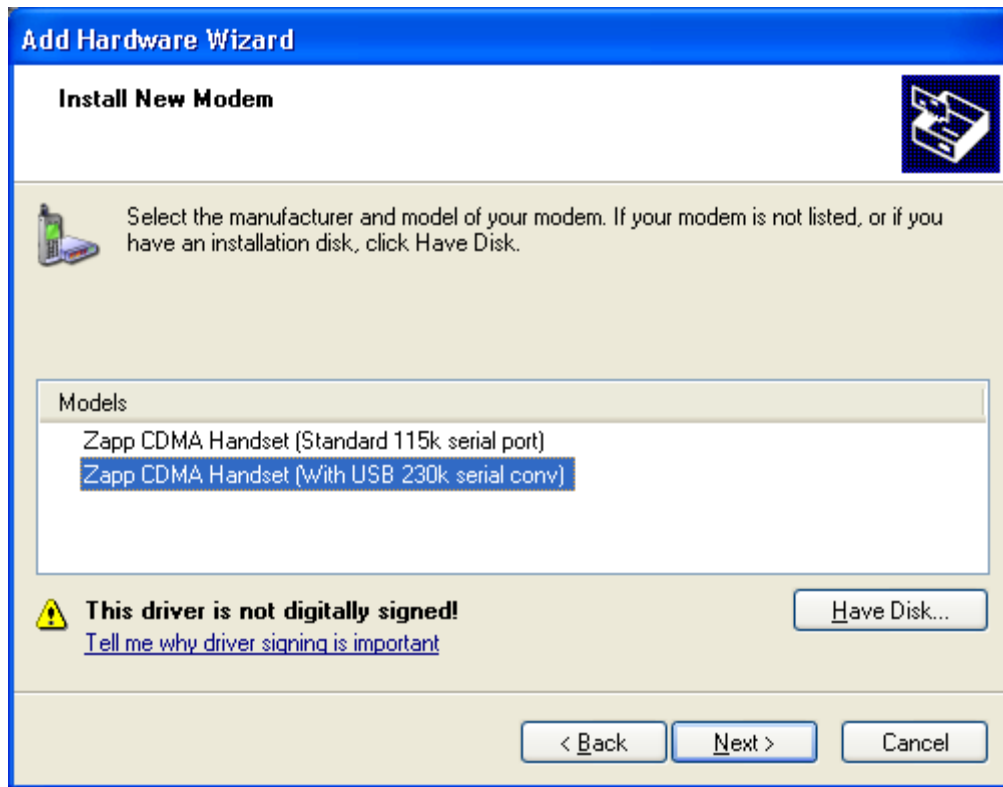
You should wait until Add Hardware Wizard windows appears.



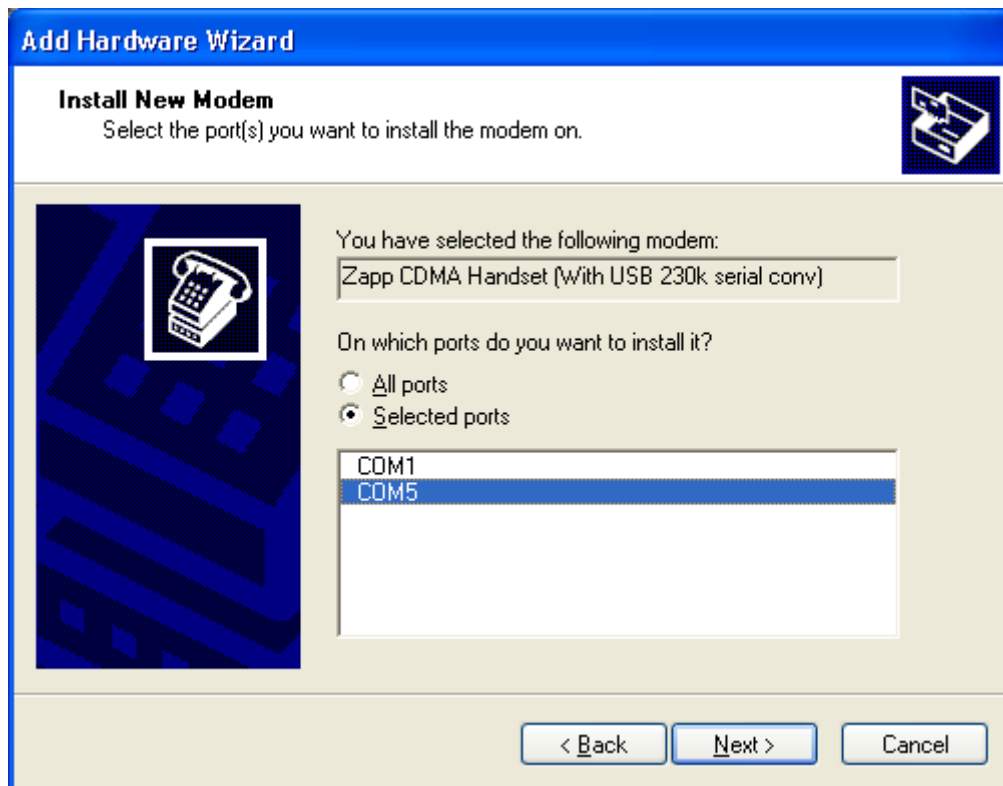
Click Have Disk and Browse for the Zapp Modem driver location.



Select the driver and click Open.  
Select the proper Zapp Modem (230k)  
Click Next



Select the COM assigned to USB cable.



Click Next.

You will see a warning message. Click "Continue Anyway".

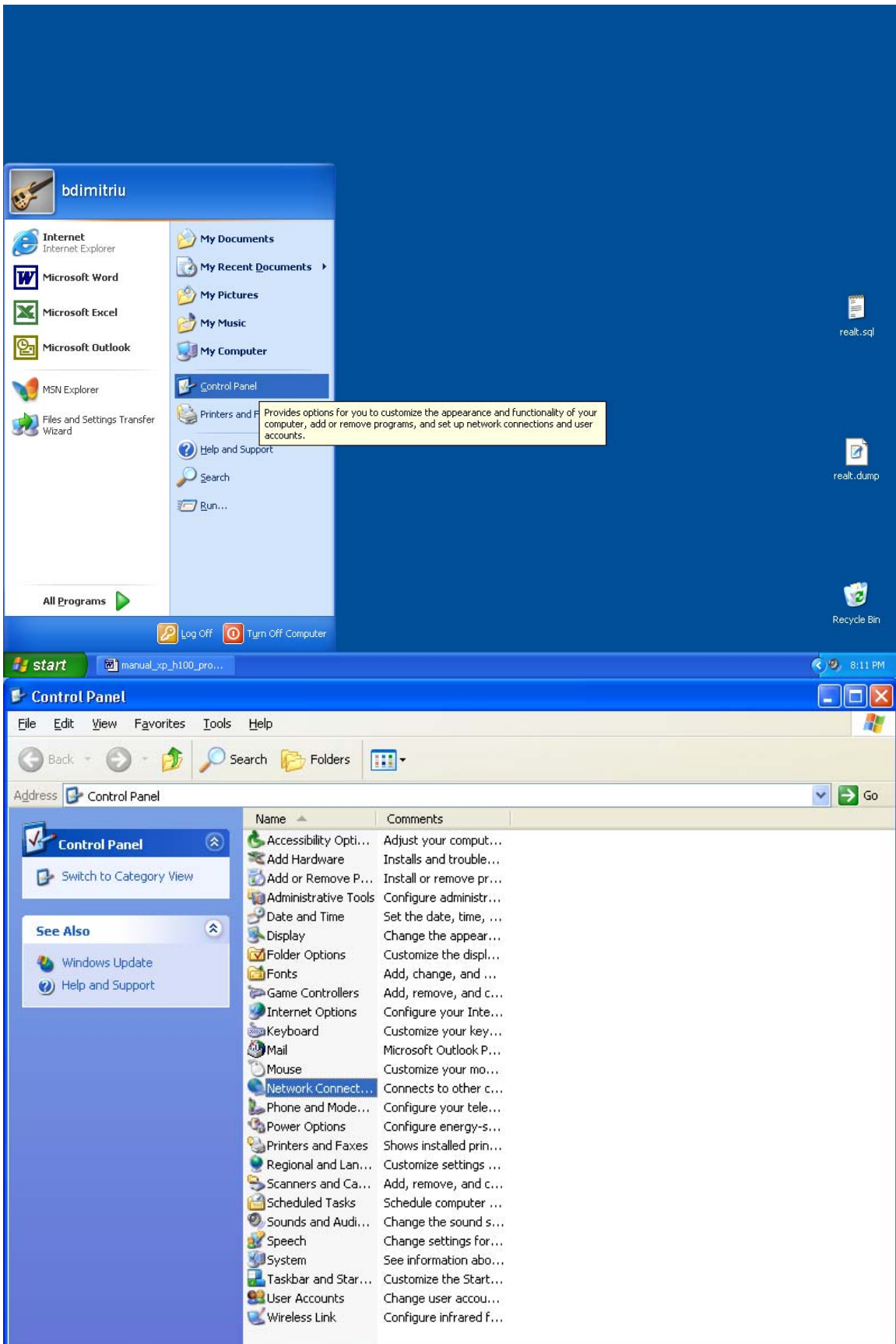


Click Finish

### Establish a dial-up connection

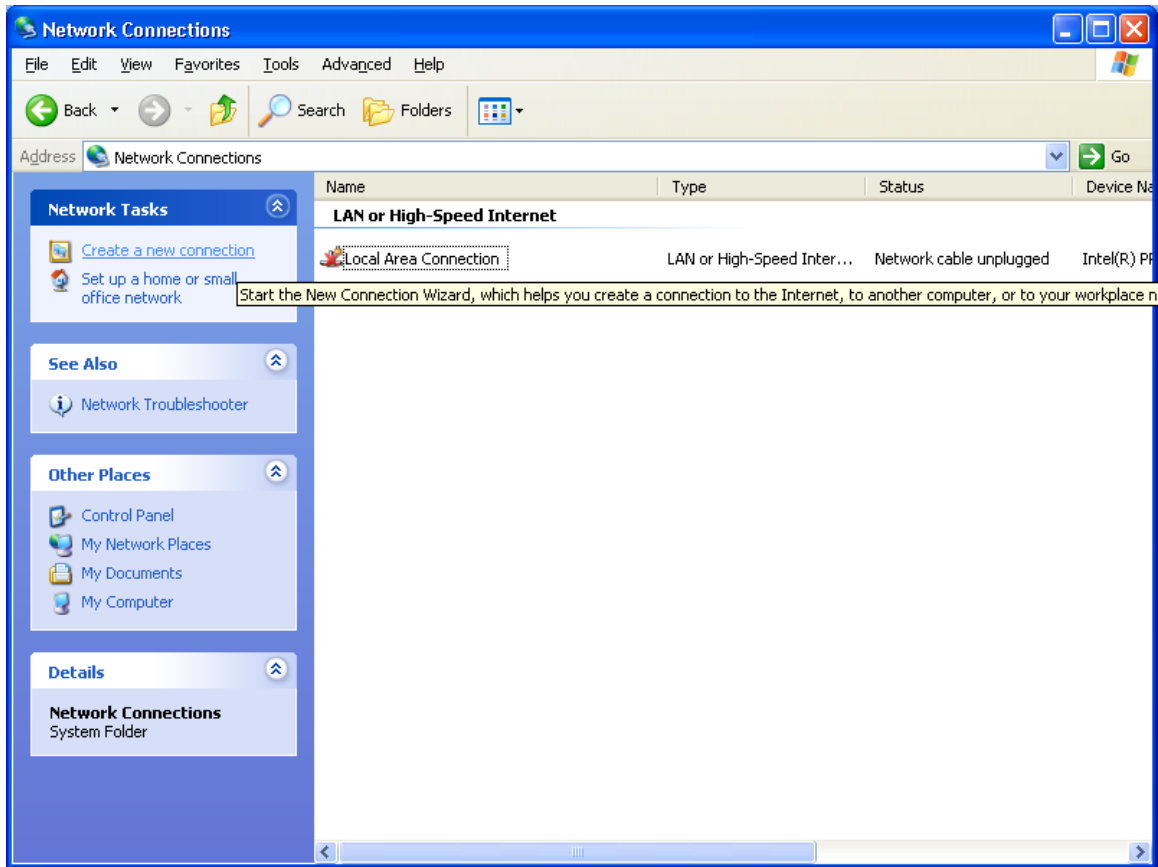
Click Start.

Go to Control Panel



## Network Connection

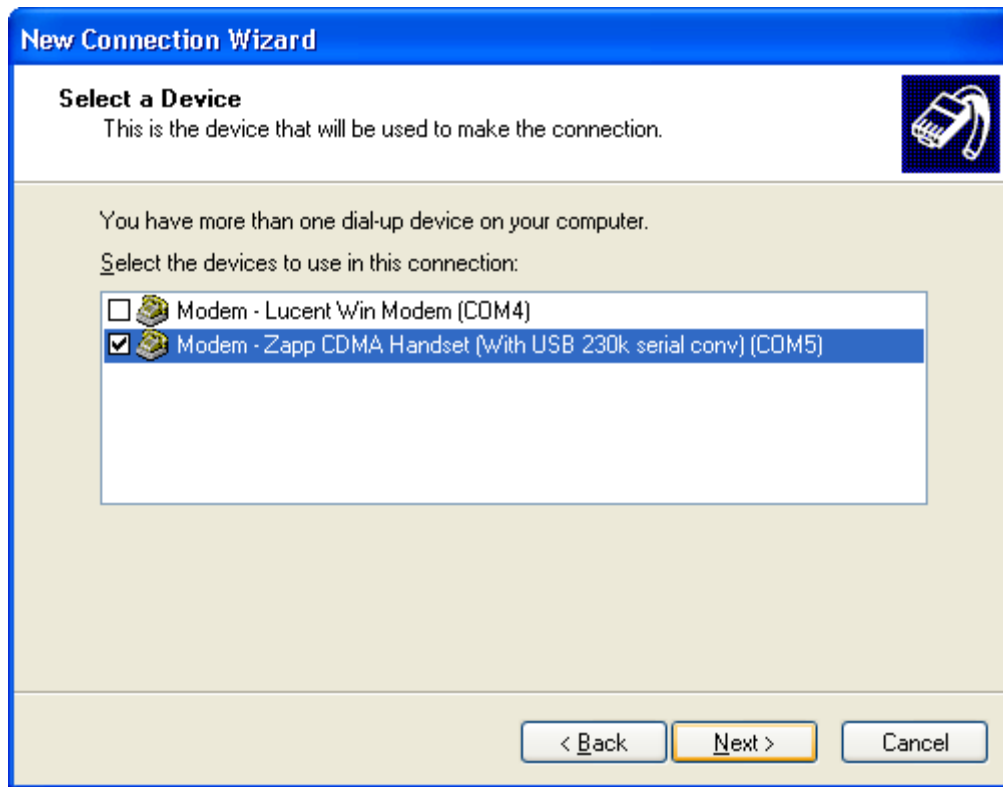
Create a new connection



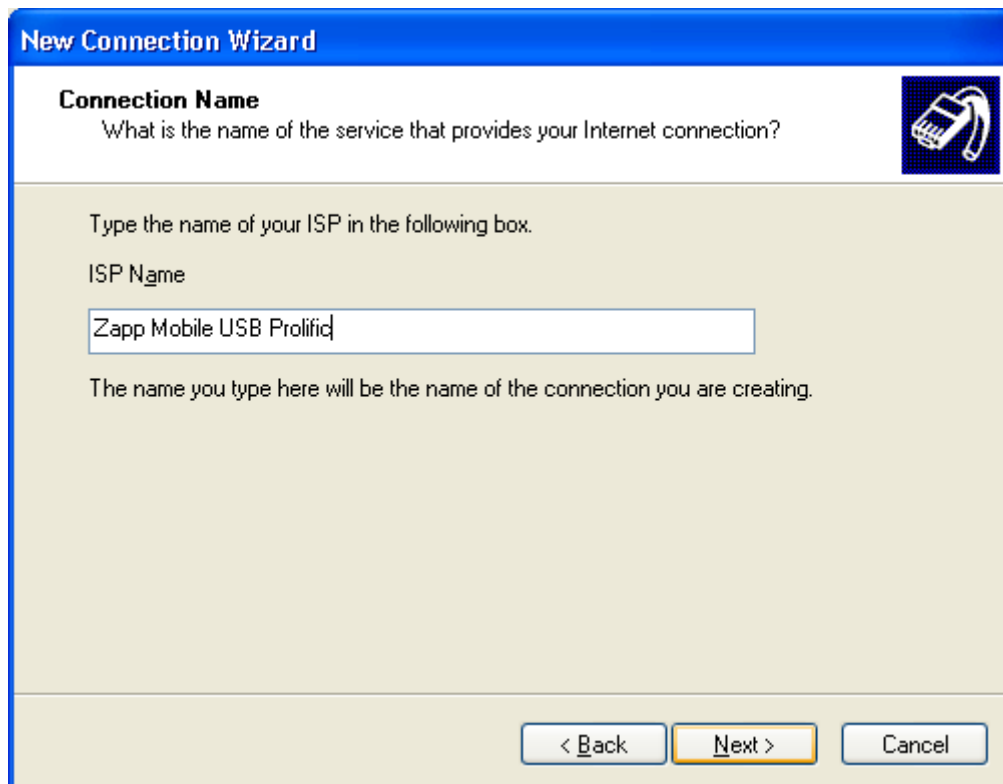
Click Next  
Select "Connect to Internet"  
Set up my connection manually.



Connect using a dial-up modem  
Select the Zapp Modem you have already installed.



Click Next  
Enter the connection name (example: ZappMobile USB Prolific)



Enter the Phone Number: #777

**New Connection Wizard**

**Phone Number to Dial**  
What is your ISP's phone number?

Type the phone number below.

Phone number:

You might need to include a "1" or the area code, or both. If you are not sure you need the extra numbers, dial the phone number on your telephone. If you hear a modem sound, the number dialed is correct.

< Back   Next >   Cancel

Enter any username and any password.

**New Connection Wizard**

**Internet Account Information**  
You will need an account name and password to sign in to your Internet account.

Type an ISP account name and password, then write down this information and store it in a safe place. (If you have forgotten an existing account name or password, contact your ISP.)

User name:

Password:

Confirm password:

Use this account name and password when anyone connects to the Internet from this computer

Make this the default Internet connection

Turn on Internet Connection Firewall for this connection

< Back   Next >   Cancel

Now you may use the Zapp connection.

**Connecting Zapp Mobile USB Prolific ...**

Dialing #777...

Cancel