

## Installation Guide

### S200 / Windows98 / Serial Cable

Cables.....	1
Handset Settings .....	1
Modem installation.....	1
Dial Up Configuration.....	5

### Cables

Connect it to the mobile telephone to PC using the Serial Cable



The RS-232 end will be connected to the serial port of your computer



### Handset Settings

press menu

press 6;

press 2 ;

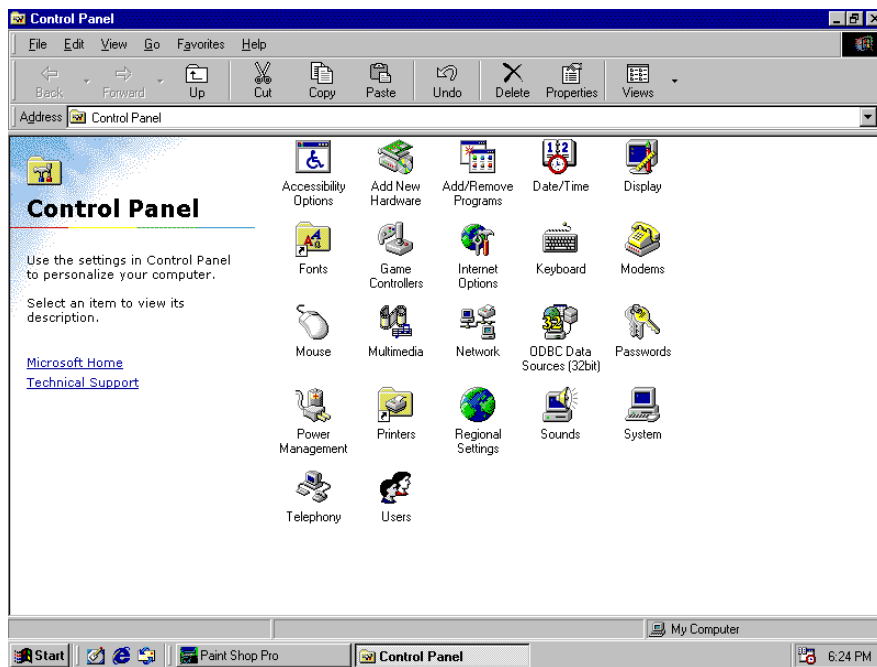
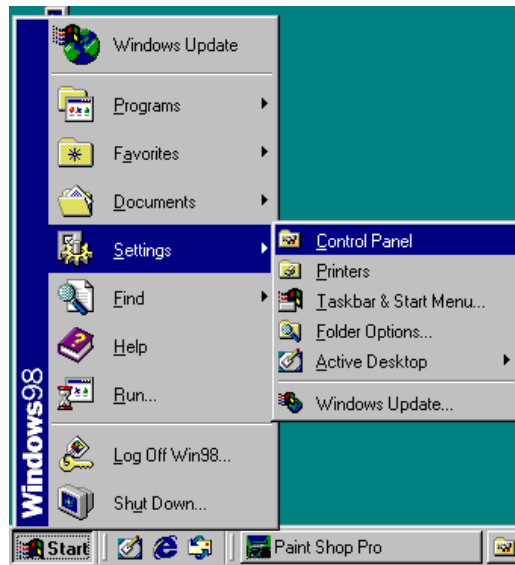
select 115200 using up/down arrows

Note: the serial cable, due to manufacturing purposes, limits the data transfer speed1 at 115.2 kbps.

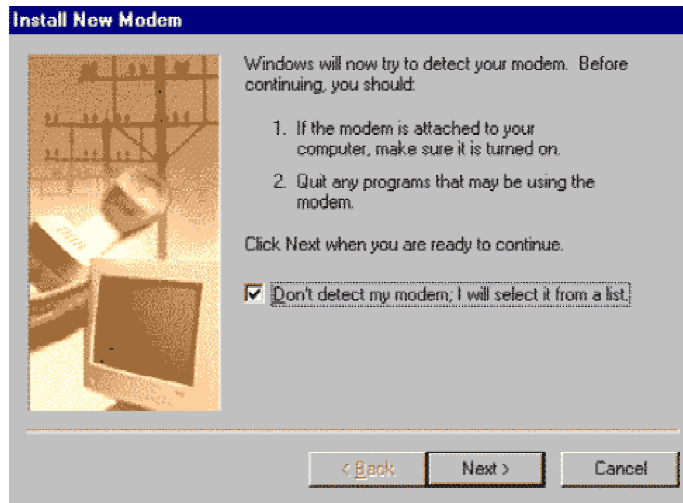
### Modem installation

Note: the handset is equipped with a built-in modem, which means you don't need to buy a modem if you want to connect to Internet using a dial-up connection. For this reason, the PC/laptop needs to be set-up in a similar scenario as an external modem set-up. This paragraph will guide you through the steps you need to follow in order to get this modem installed.

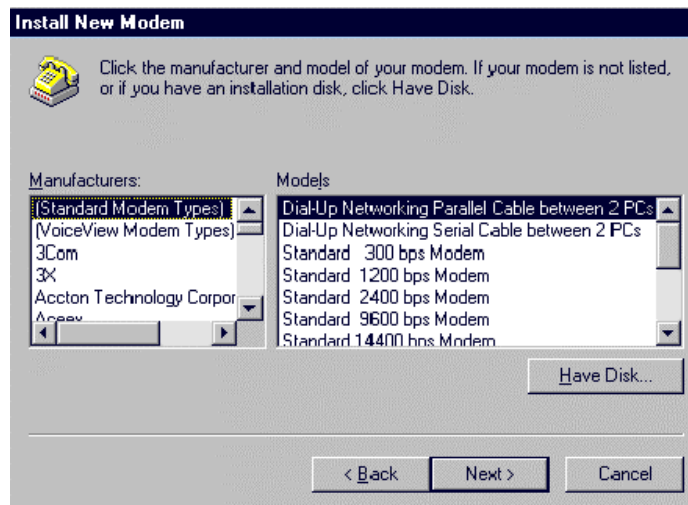
After you closed all your running applications (recommended), click the Windows Start button and go to Control Panel.



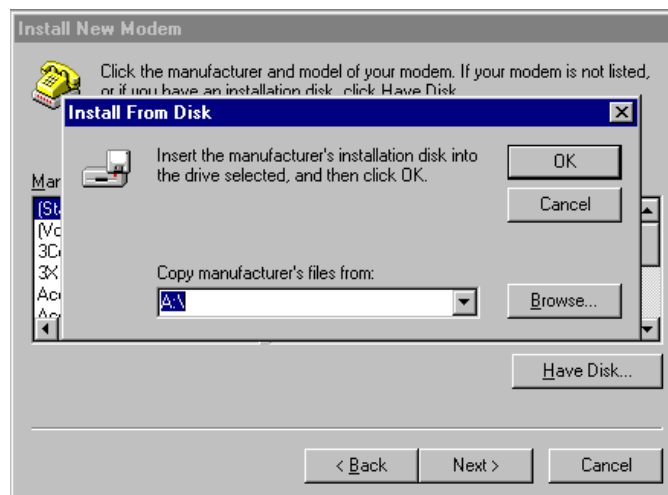
Double click "Modems" icon within the Control Panel  
Press Add New Modem



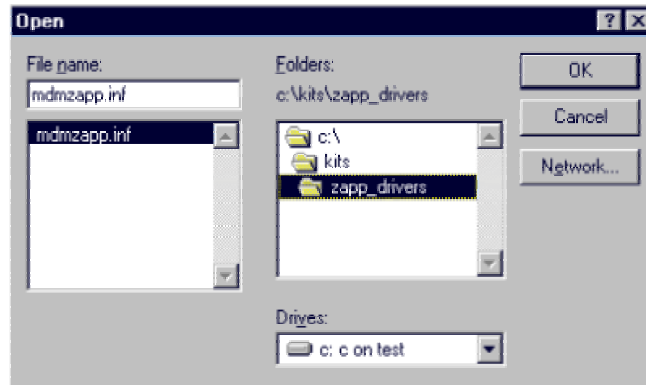
Click the check box named "Don't detect my modem; I will select it from a list"; click next;



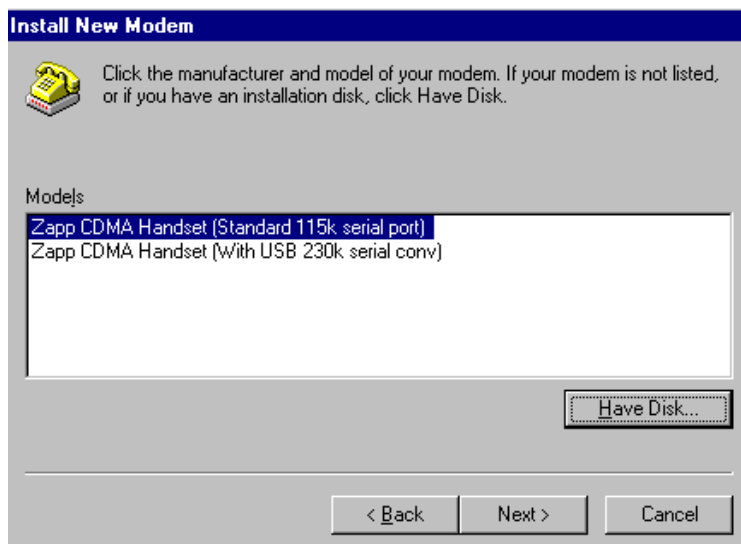
Click: Have Disk



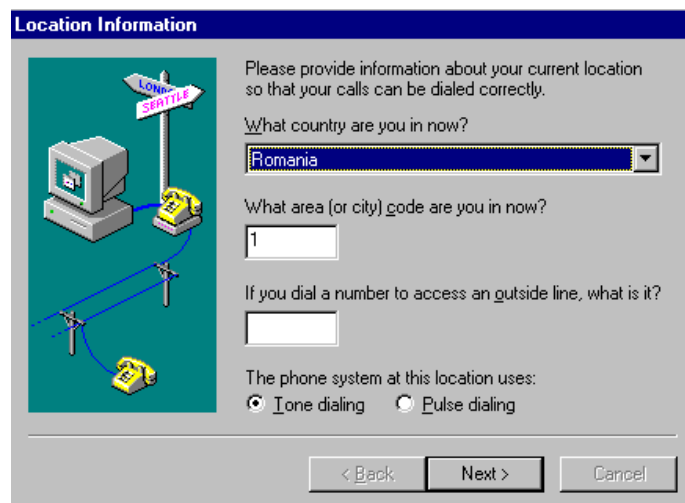
Browse to the location where your Zapp Modem driver is located (we recommend to keep the Zapp driver in a special folder like c:\drivers\zapp\_drivers)



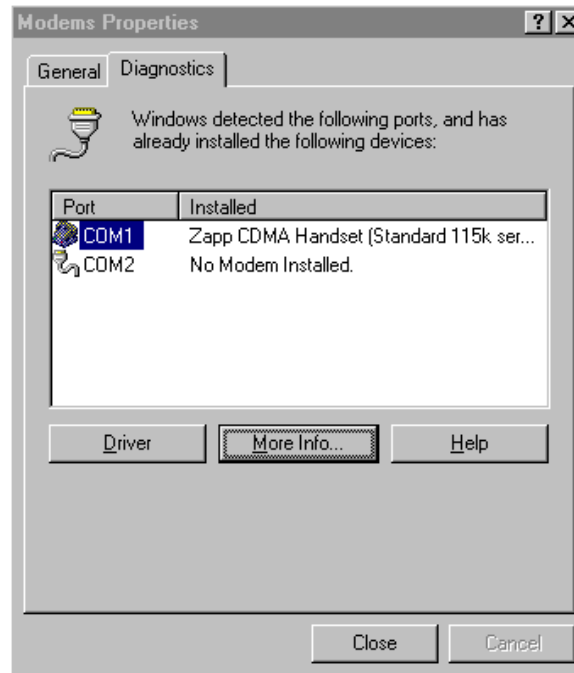
Select Zapp CDMA Handset (Standard 115k serial port) model



Click next

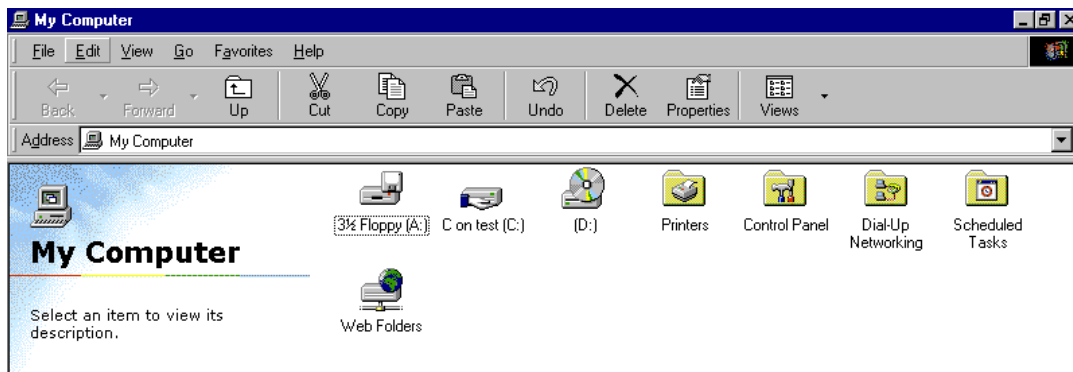


Select the proper communication port (example: COM1) to which your CDMA device is connected.

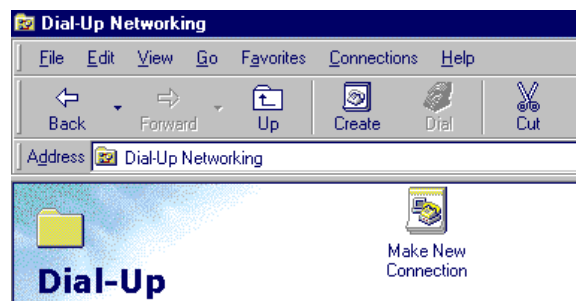


## Dial Up Configuration

Open My Computer

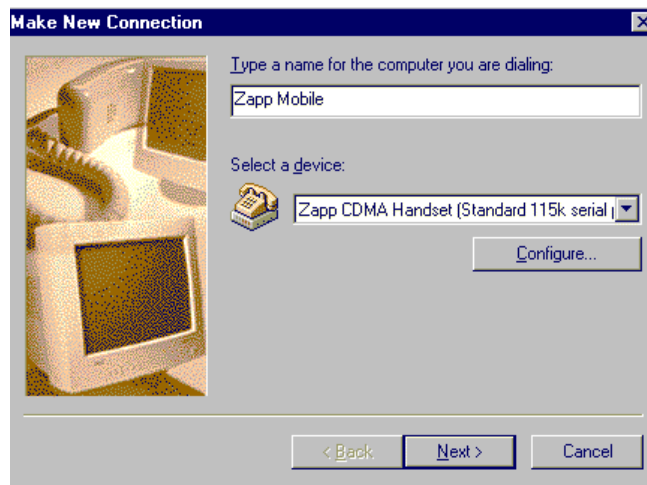


Open Dial Up Networking

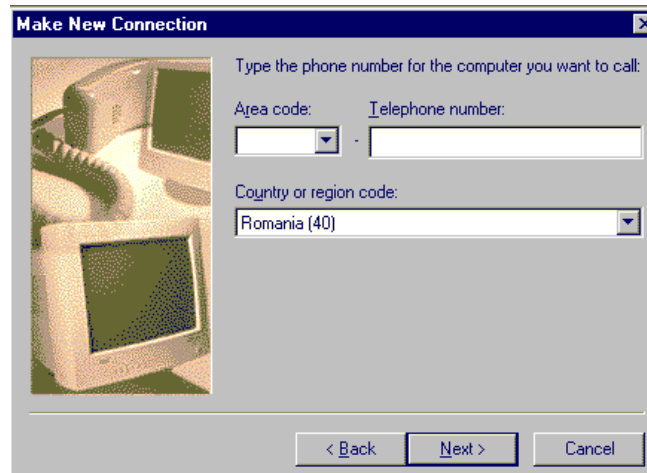


### Make New Connection

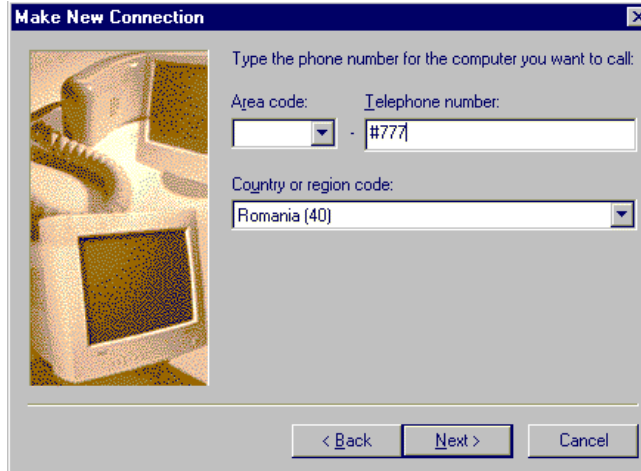
Type a name for the connection (like "ZappMobile")  
Select Zapp CDMA Handset (Standard 115k serial).



Click Next



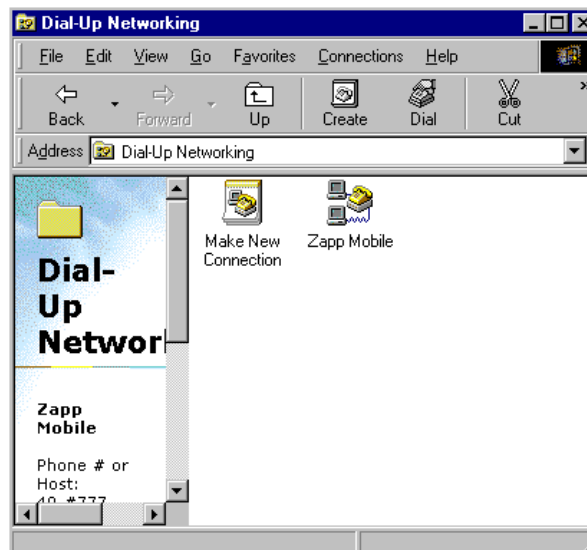
Enter the Telephone number: #777  
Select country or region code: Romania (40)



Click next



Click Finish.



Right click the connection.

Note: Do not check "Use area code and Dialing Properties".

Click OK

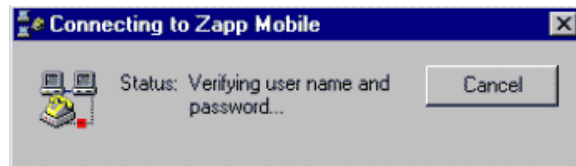
Double click the connection you have just made (example: Zapp Mobile)



The screenshot shows a Windows dialog box titled "Connect To" with a close button (X) in the top right corner. The dialog is for a connection named "Zapp Mobile". It contains the following fields and controls:

- User name:** A text box containing "nume utilizator".
- Password:** An empty text box.
- Save password**
- Phone number:** A text box containing "777".
- Dialing from:** A dropdown menu currently set to "New Location", with a "Dial Properties..." button to its right.
- At the bottom, there are two buttons: "Connect" and "Cancel".

Enter any username. The Password field has no importance for the time being.  
Click Connect. It takes a few seconds until the computer shall be connected.



When connection is established you shall see the following icon in the lower right corner of the screen.

