

Manual de instalare

H-100 / Windows98 / Cablu Serial + Adaptor USB – serial (ATEN)

Setarea vitezei terminalului H-100.....	1
Conectarea cablurilor / instalarea Adaptorului USB (ATEN)	1
Instalarea Modemului Zapp (inclus in terminalul Zapp).....	3
Stabilirea unei conexiuni Dial-Up cu rețeaua Zapp.....	6



Setarea vitezei terminalului H-100

Pentru a putea obtine viteza maxima de transfer, modemul inclus in terminalul Zapp trebuie setat la viteza 230400:

Apasati tasta "Menu"

Apasati tasta "7"

Apasati tasta "3"

Selectati (cu ajutorul cursorului) valoarea 230400

Apasati tasta Menu

Viteza terminalului Zapp este acum 230400 bps.

Conectarea cablurilor / instalarea Adaptorului USB (ATEN)

Conectati telefonul in cablul serial

Conectati cablul serial in adaptorul USB



Cablu Serial + Adaptor USB – Serial

Conectati adaptorul USB la portul USB al calculatorului.



Click Next

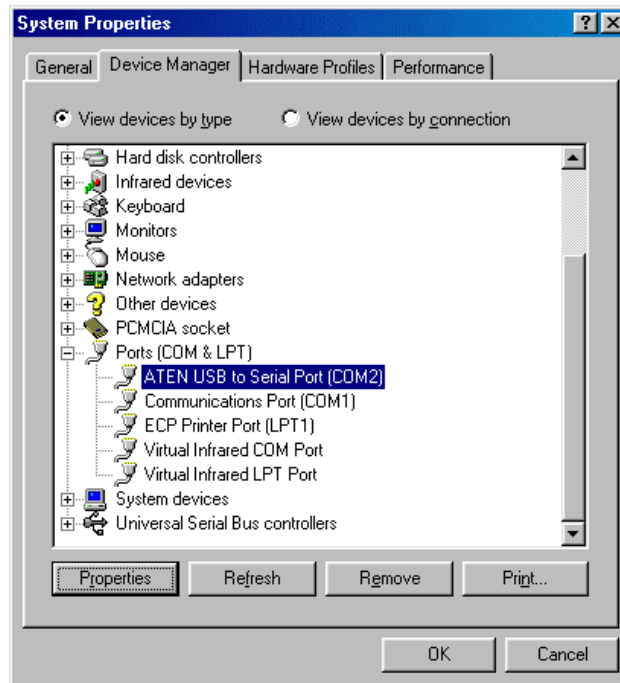


Selectati "Search for the best driver for your device". Click Next

Specificati locatia in care se afla driverul .

Obs: Adaptorul USB-serial (produs de ATEN) este livrat cu un set de drivere (discheta sau CD).

In urma instalarii corecte veti vedea un nou port (COM) in Device Manager
My Computer > Control Panel > System > Device Manager > Ports (COM & LPT)

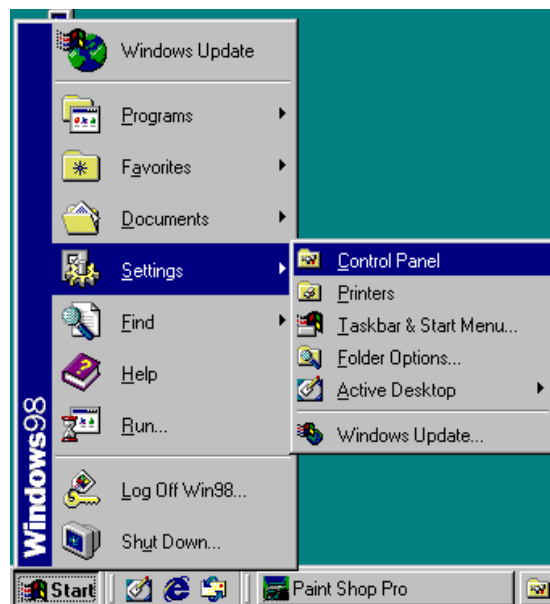


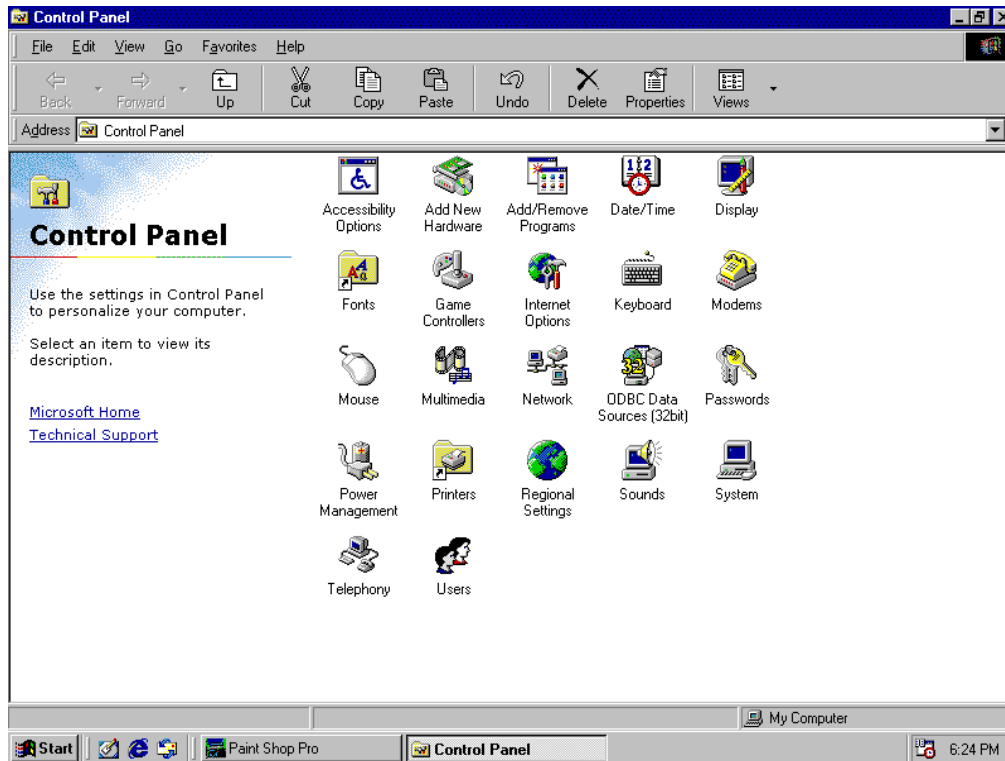
ATEN USB to Serial Port (COM*)

Instalarea Modemului Zapp (inclus in terminalul Zapp)

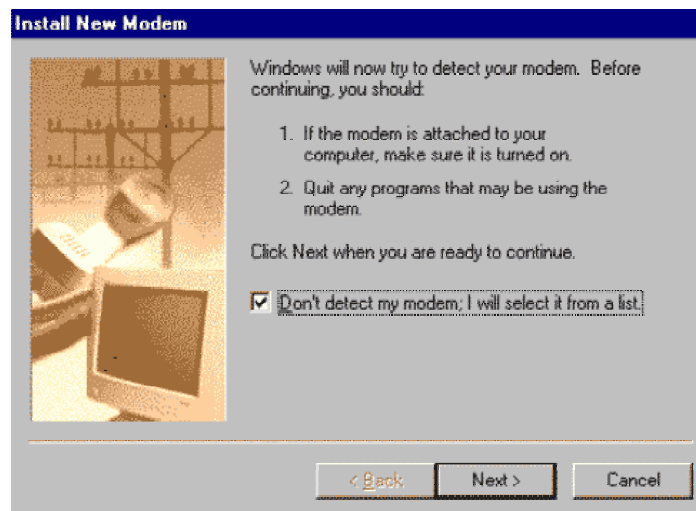
Pentru conectarea la Internet, terminalele Zapp sunt echipate cu un modem (inclus in telefon). Pentru a putea functiona, acesta trebuie sa fie instalat in sistemul de operare.

Dupa ce ati inchis toate aplicatiile (operatiune recomandata), click pe butonul Start. Deschideti Control Panel.

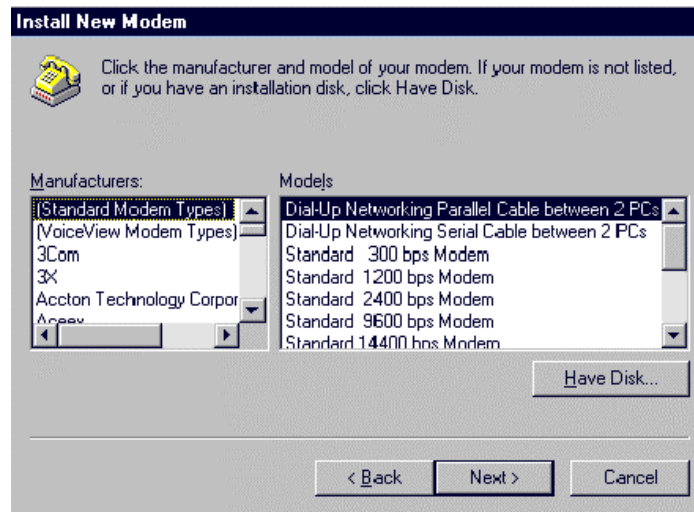




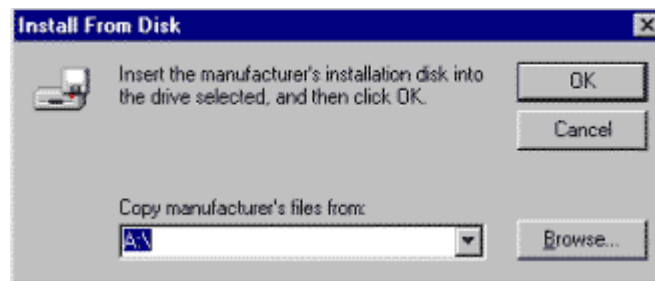
Dublu click pe "Modems"
Click "Add New Modem"



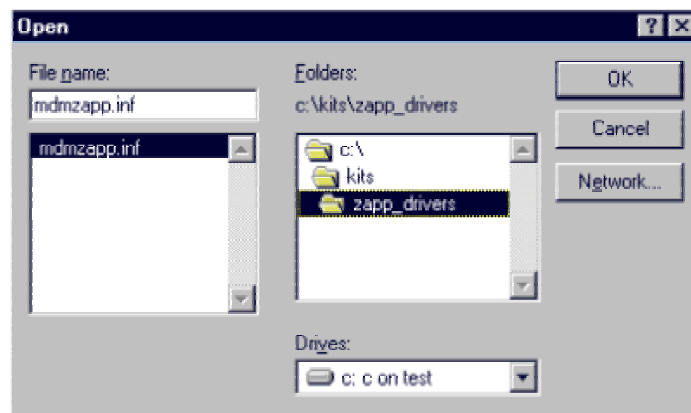
Selectati "Don't detect my modem; I will select it from a list"; click next;



Click: Have Disk



Click pe "Browse" pentru a indica locatia in care se afla driverul de modem (Zapp Modem).

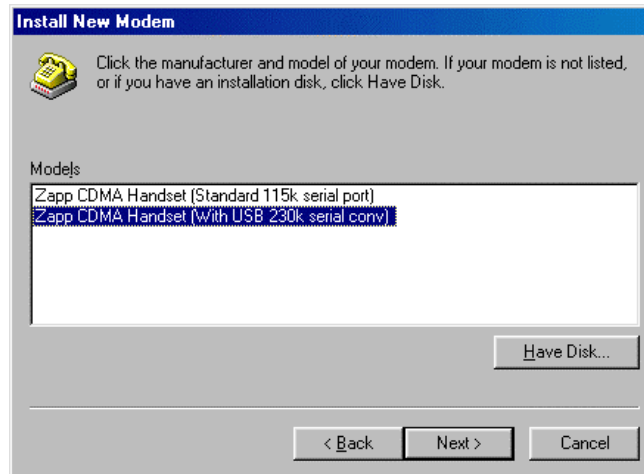


In cazul de fata fisierul cu driverele Zapp este mdmzapp.inf

Driverule Zapp pot fi copiate de la adresa:

<http://www.zappmobile.ro/data/drivers.html>

Selectati Zapp CDMA Handset (With USB 230k serial conv.) model

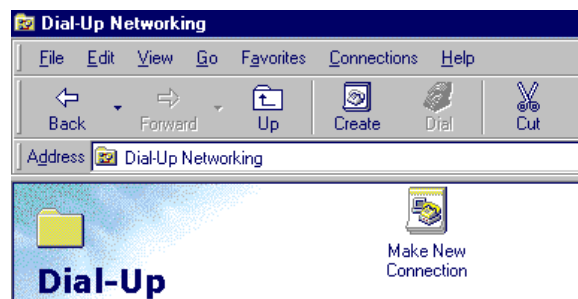


Click next

Selectati portul de comunicatie asociat portului USB (in urma instalarii cablului/interfetei USB); EX: COM4
Click "Next"

Stabilirea unei conexiuni Dial-Up cu rețeaua Zapp

Deschideti My Computer > Dial Up Networking

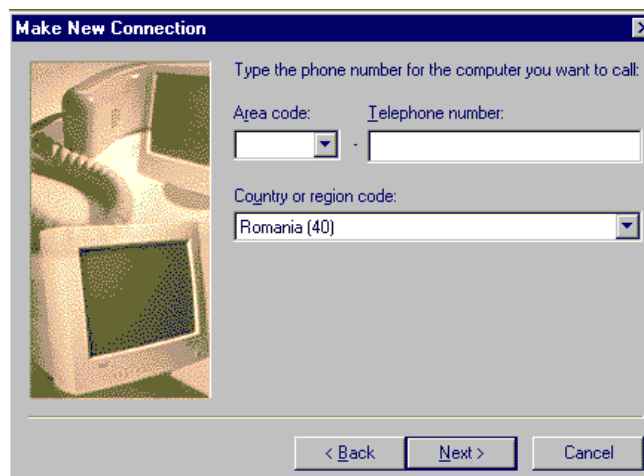


Make New Connection

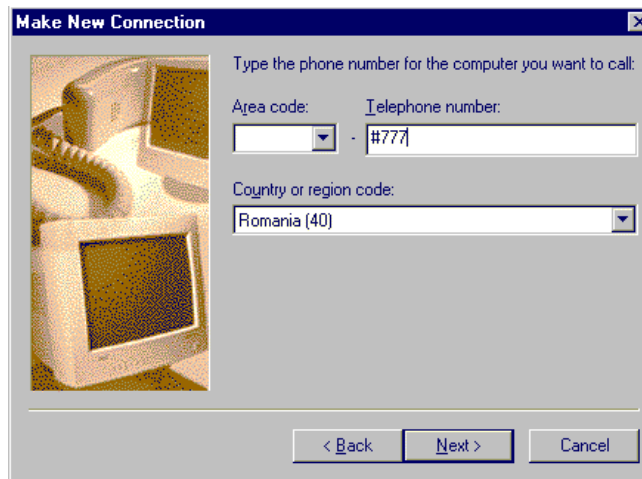
Scriti un nume pentru noua conexiune (ex: "ZappMobile")

Selectati ca modem: Modem – Zapp CDMA Handset (With USB 230k serial conv)

Click Next



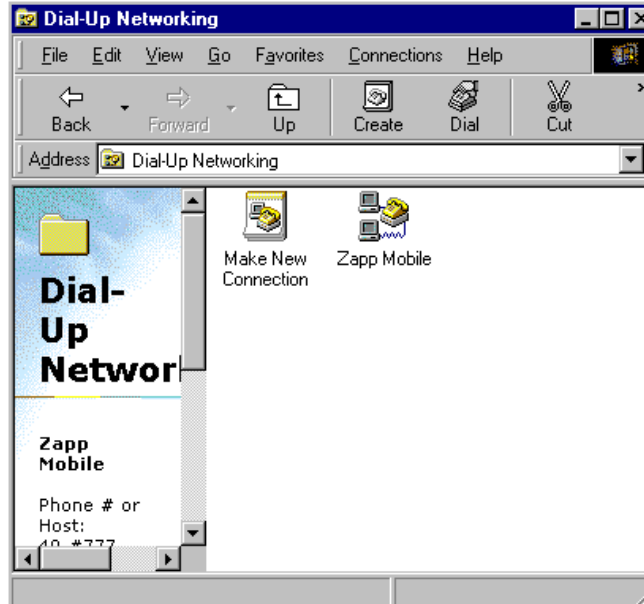
Numarul de telefon este: #777 (obligatoriu cu semnul #)
Country or region code: Romania (40)



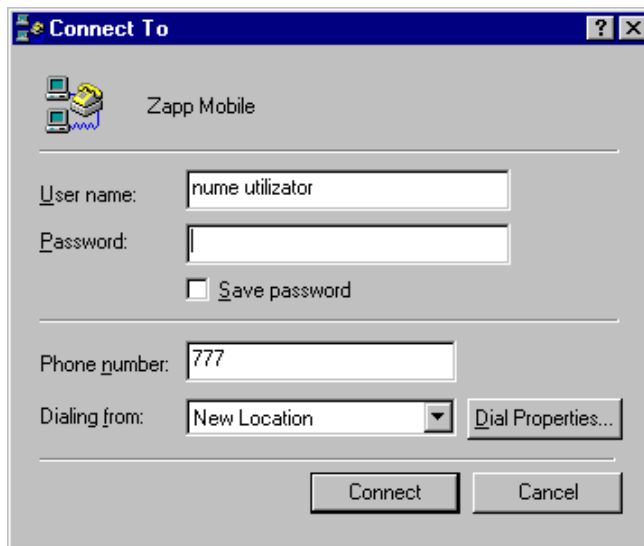
Click next



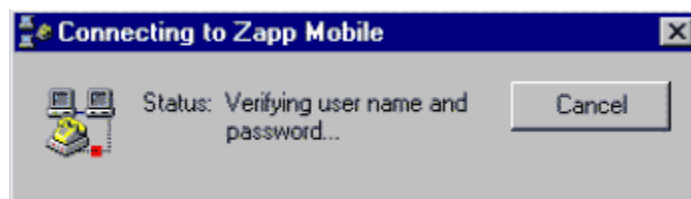
Click Finish.



Dublu click pe noua conexiune ("Zapp Mobile" in acest caz)



Folositi orice username/password.
Click connect.



In cateva secunde va fi stabilita conexiunea.

