

Configurarea unei conexiuni PC to Zapp Synertek S200 / Windows98 / Cablu USB Direct (fabricat de Prolific)

Setarea vitezei terminalului S200	1
Conectarea cablurilor.....	2
Instalarea Modemului Zapp (inclus in terminalul Zapp).....	3
Stabilirea unei conexiuni Dia-Up cu retea Zapp	7



Terminalul Synertek S200 si Cablul USB Direct (fabricat de Prolific)

Setarea vitezei terminalului S200

Pentru a putea obtine viteza maxima de transfer, modemul inclus in terminalul Zapp trebuie setat la viteza 230400:

Apasati tasta "Menu"

Apasati tasta "6"

Apasati tasta "2"

Selectati (cu ajutorul cursorului) valoarea 230400

Apasati tasta OK

PREV

Viteza terminalului Zapp este acum 230400 bps.

Conectarea cablurilor

Conectati telefonul in cablul USB. Conectati Cablul USB in PC
Va fi lansat un "wizard" de instalare pt noul periferic USB.



Click Next



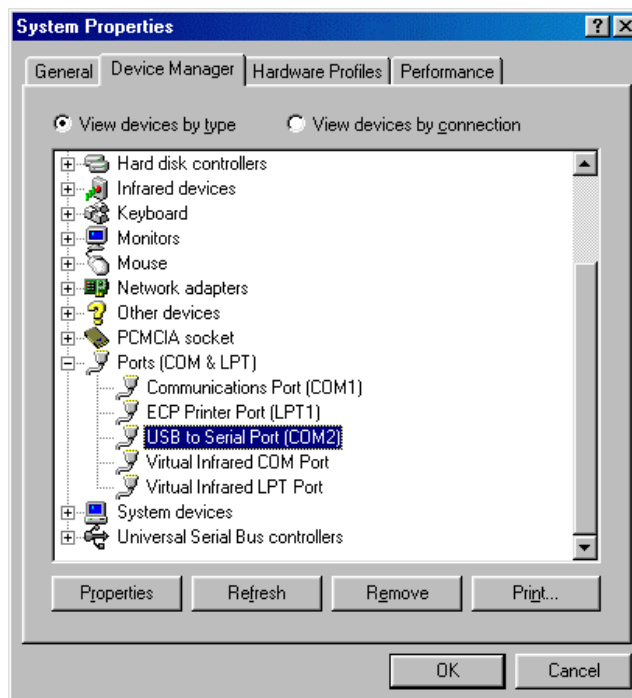
Selectati "Search for the best driver for your device". Click Next



Specificati locatia in care se afla diversul cablului USB.

Drivererele sunt disponibile si la adresa <http://www.zappmobile.ro/data>

In urma instalarii corecte veti vedea un nou port (COM) in Device Manager
My Computer > Control Panel > System > Device Manager > Ports (COM & LPT)

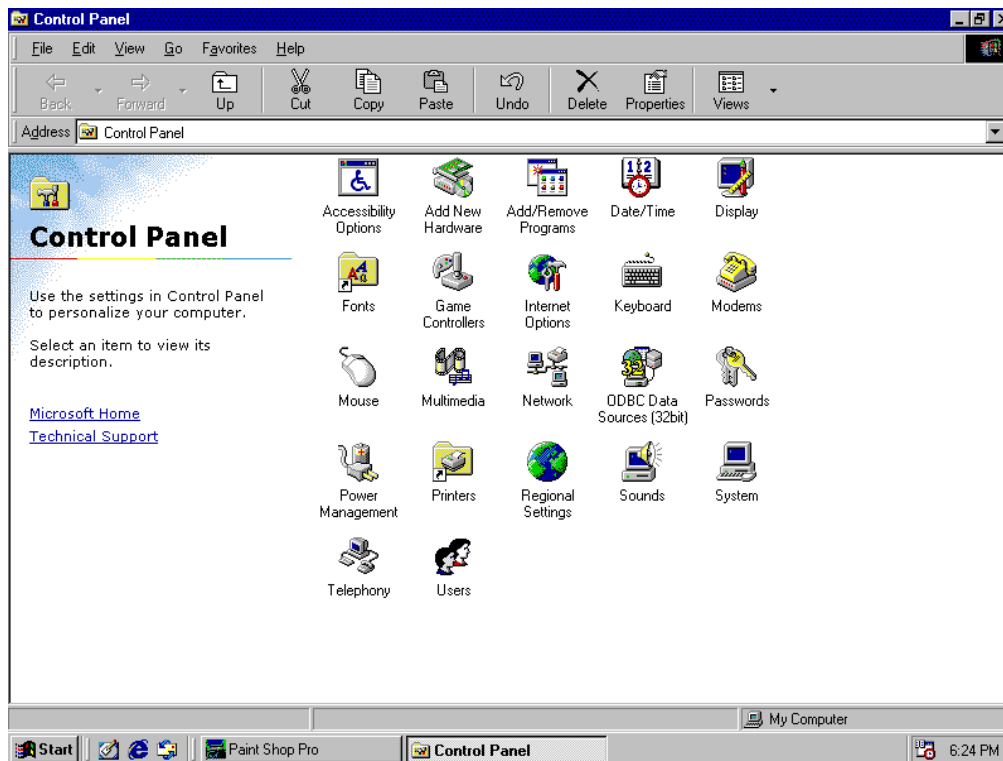


USB to Serial Port (COM*)

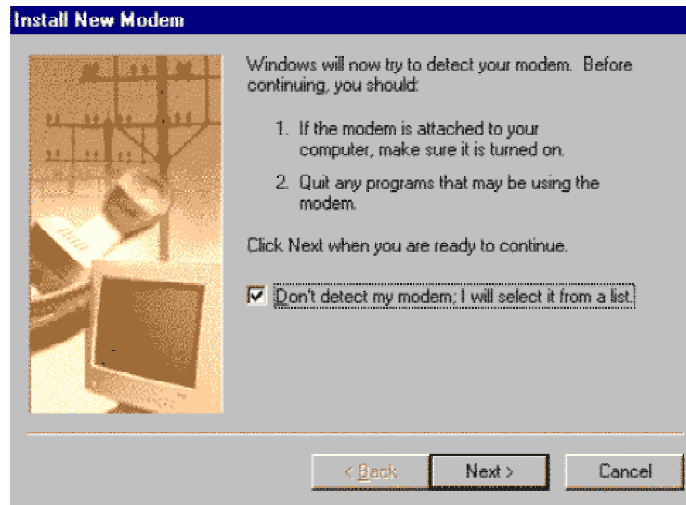
Instalarea Modemului Zapp (inclus in terminalul Zapp)

Pentru conectarea la Internet, terminalele Zapp sunt echipate cu un modem (inclus in telefon). Pentru a putea functiona, acesta trebuie sa fie instalat in sistemul de operare.

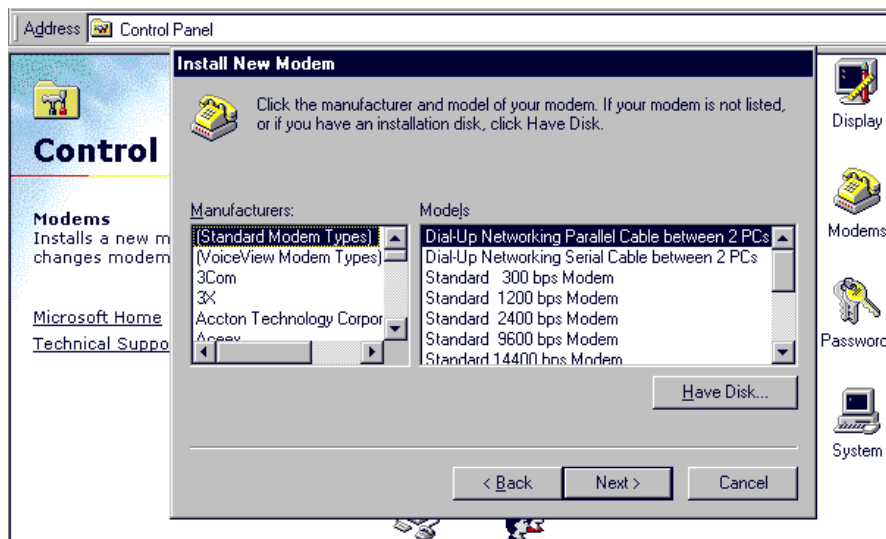
Dupa ce ati inchis toate aplicatiile (operatiune recomandata), click pe butonul Start.
Deschideti Control Panel.



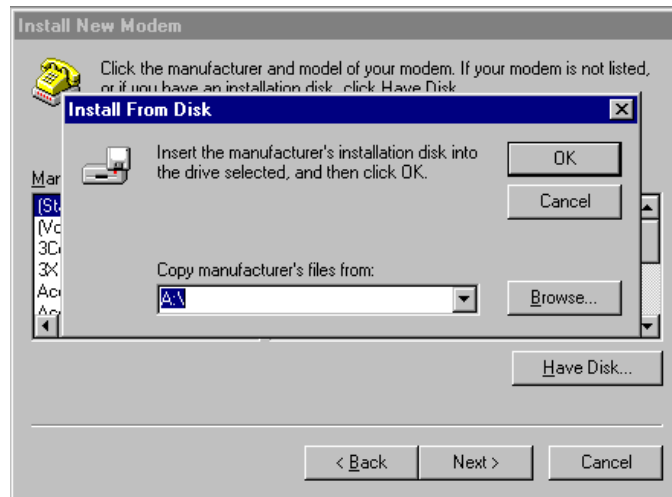
Dublu click pe "Modems"
Click "Add New Modem"



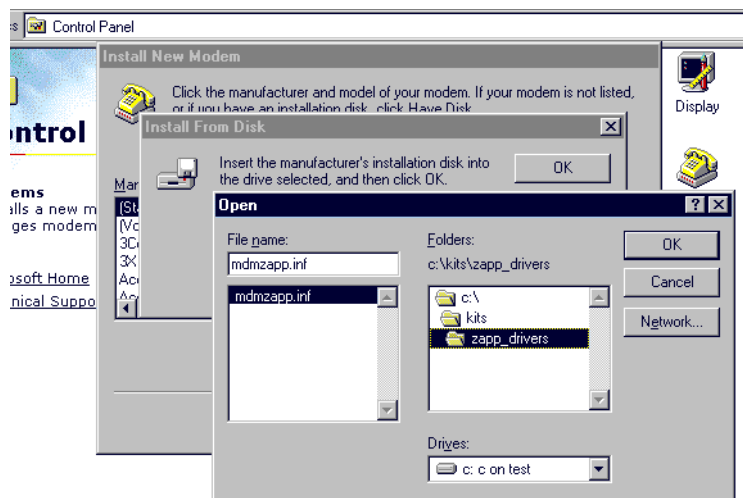
Selectati "Don't detect my modem; I will select it from a list"; click next;



Click: Have Disk



Click pe "Browse" pentru a indica locatia in care se afla driverul de modem (Zapp Modem).

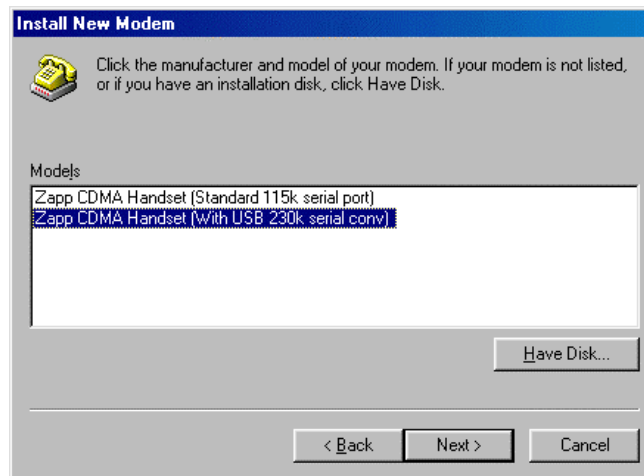


In cazul de fata fisierul cu driverele Zapp este mdmzapp.inf

Driverule Zapp pot fi copiate de la adresa:

<http://www.zappmobile.ro/data/drivers.html>

Selectati Zapp CDMA Handset (With USB 230k serial conv.) model



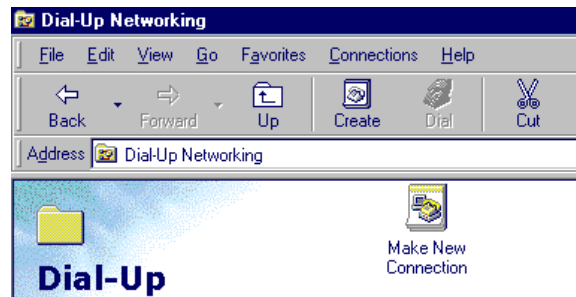
Click next

Selectati portul de comunicare asociat portului USB (in urma instalarii cablului/interfetei USB); EX: COM4

Click "Next"

Stabilirea unei conexiuni Dia-Up cu retea Zapp

Deschideti My Computer > Dial Up Networking

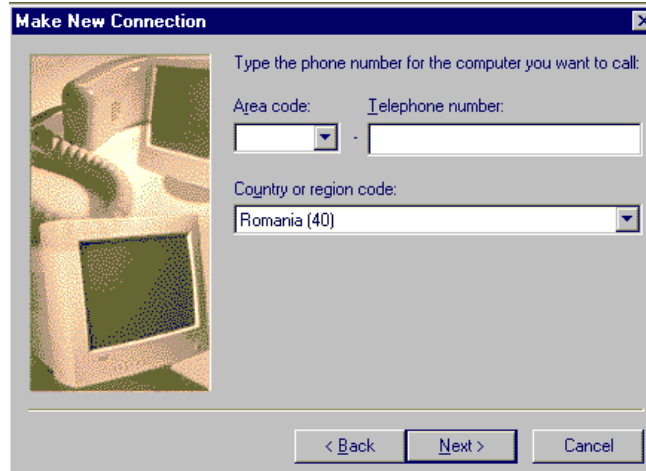


Make New Connection

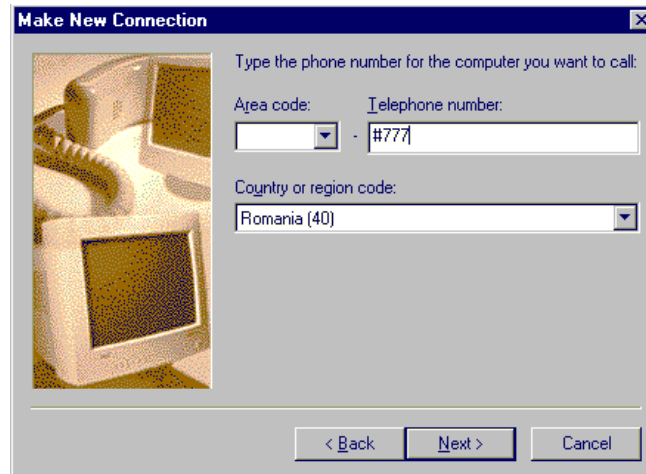
Scrieti un nume pentru noua conexiune (ex: "ZappMobile")

Selectati ca modem: Modem – Zapp CDMA Handset (With USB 230k serial conv)

Click Next



Numarul de telefon este: #777 (obligatoriu cu semnul #)
Country or region code: Romania (40)



Click next



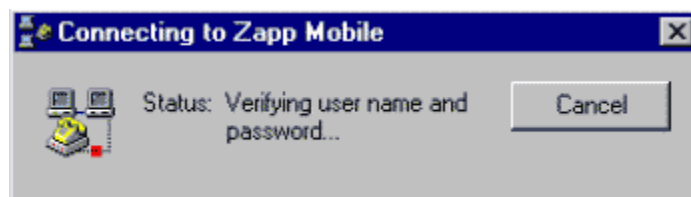
Click Finish.



Dublu click pe noua conexiune ("Zapp Mobile" in acest caz)



Folositi orice username/password.
Click connect.



In cateva secunde va fi stabilita conexiunea.

