

Configurarea unei conexiuni PC to Zapp Synertek S200 / Windows98/ Cablu Serial

Configurarea vitezei terminalului Synertek S200 la 115200 bps	1
Instalarea Modemului Zapp (inclus in terminalul Zapp).....	1
Stabilirea unei conexiuni Dial-Up cu retea Zapp.....	5



Terminalul Synertek S200 si Cablul Serial



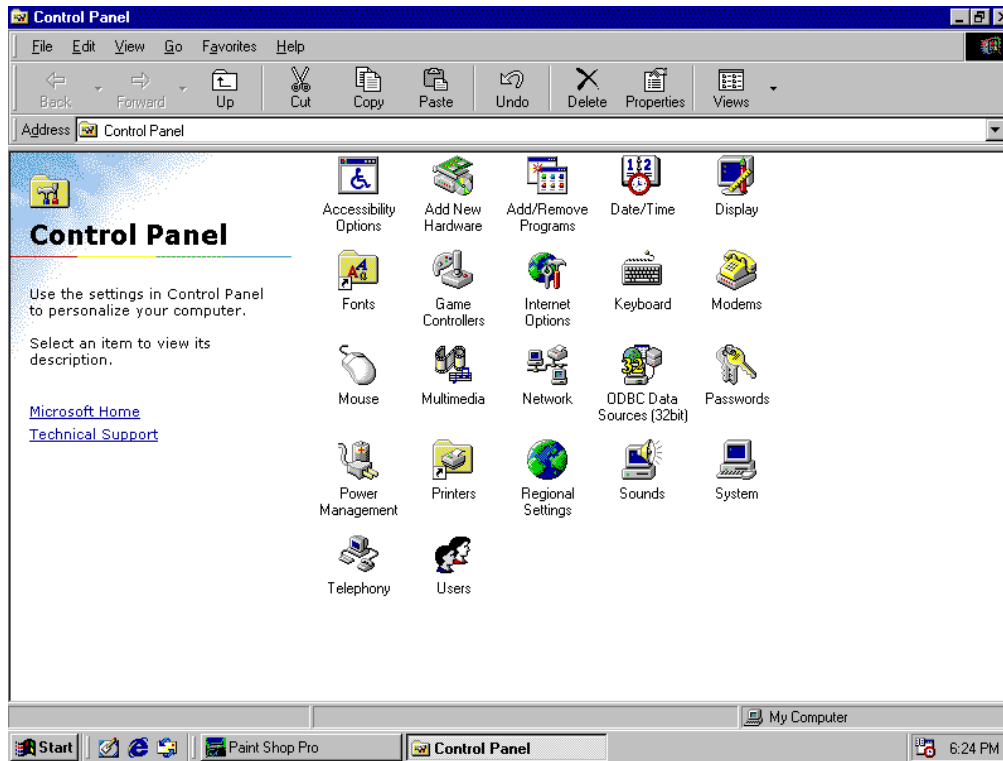
Configurarea vitezei terminalului Synertek S200 la 115200 bps

Setati viteza terminalului la 115200 bps astfel:
Apasati tasta Meniu
Apasati tasta 6
Apasati tasta 2
Selectati valoarea 115200 (folosind cursorul)
Select
PREV
Viteza terminalului Zapp este acum 115200 bps..

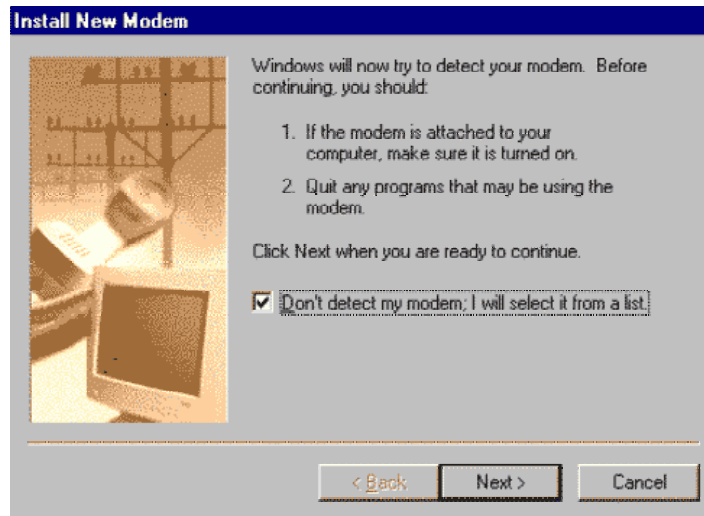
Instalarea Modemului Zapp (inclus in terminalul Zapp)

Pentru conectarea la Internet, terminalele Zapp sunt echipate cu un modem (inclus in telefon). Pentru a putea functiona, acesta trebuie sa fie instalat in sistemul de operare.

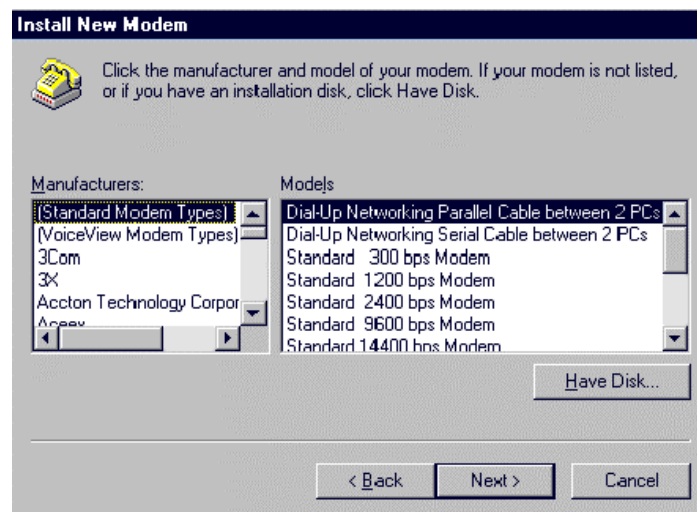
Dupa ce ati inchis toate aplicatiile (operatiune recomandata), click pe butonul Start.
Deschideti Control Panel.



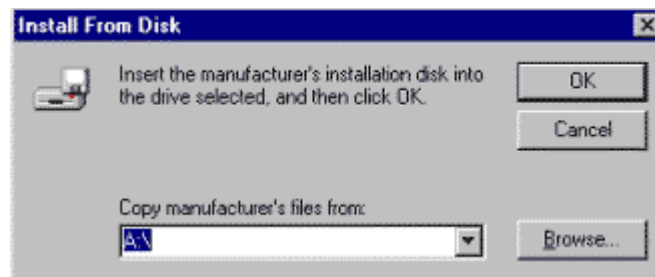
Dublu click pe "Modems"
Click "Add New Modem"



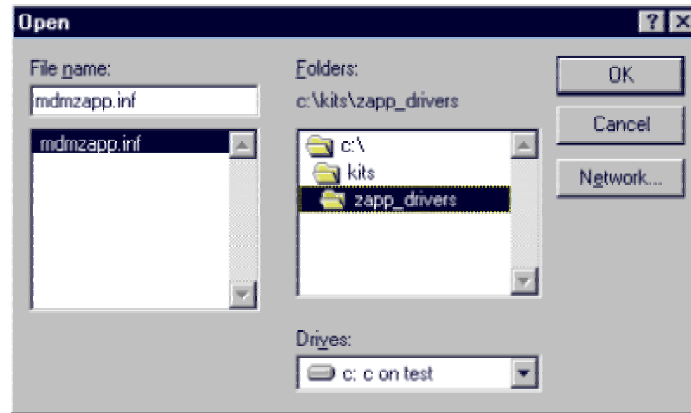
Selectati "Don't detect my modem; I will select it from a list"; click next;



Click: Have Disk



Click pe "Browse" pentru a indica locatia in care se afla driverul de modem (Zapp Modem).

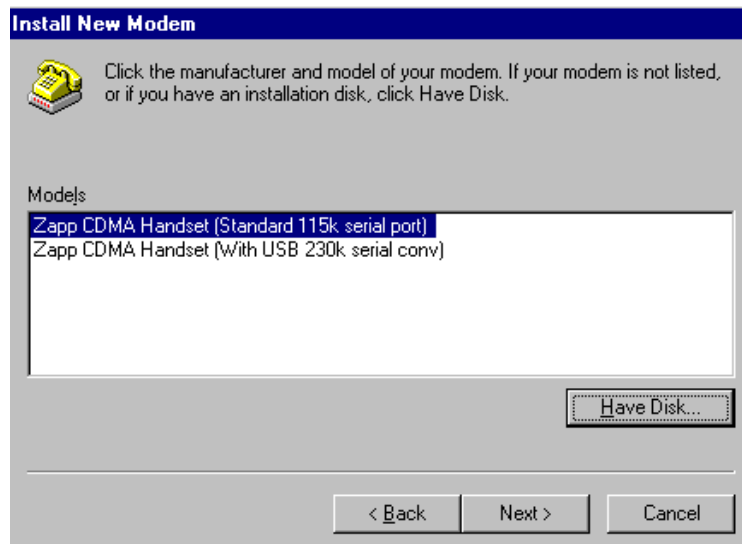


In cazul de fata fisierul cu driverele Zapp este mdmzapp.inf

Driverele Zapp pot fi copiate de la adresa:

<http://www.zappmobile.ro/data/drivers.html>

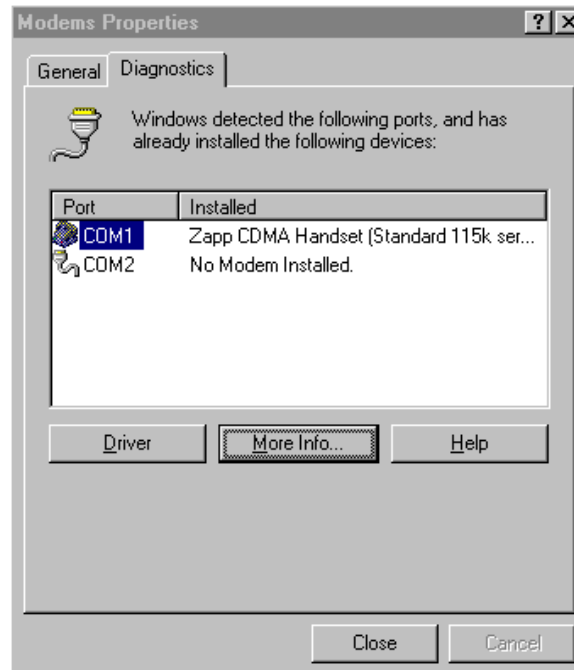
Selectati Zapp CDMA Handset (Standard 115k serial port) model



Click next

Selectati portul de comunicatie asociat portului USB (in urma instalarii cablului/interfetei USB); EX: COM1

Click "Next"



Stabilirea unei conexiuni Dial-Up cu rețeaua Zapp

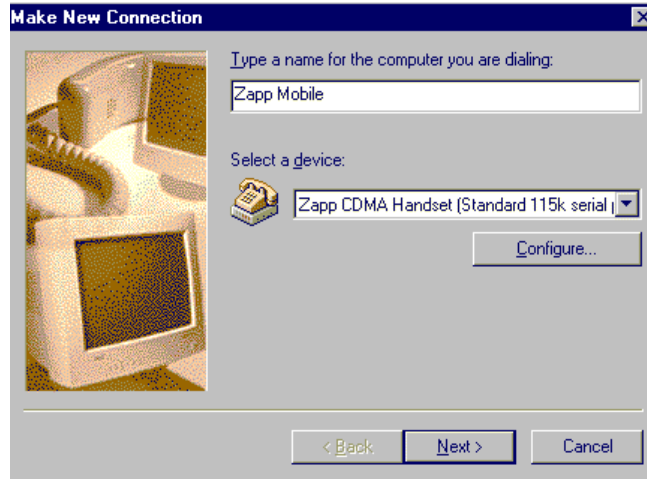
Deschideti My Computer > Dial Up Networking
Open Dial Up Networking



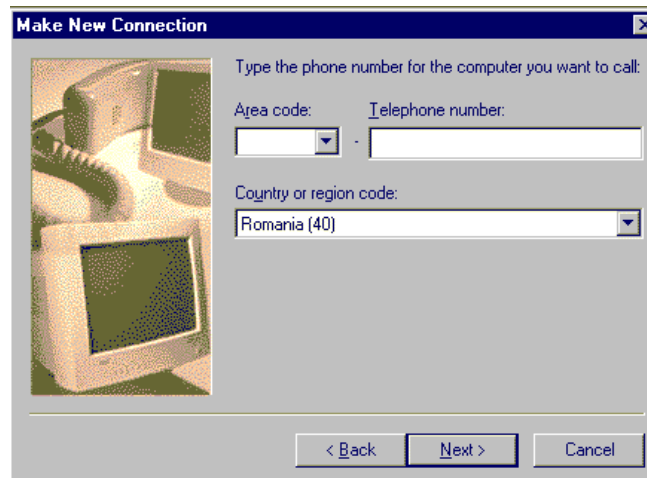
Make New Connection

Scrieti un nume pentru noua conexiune (ex: "ZappMobile")

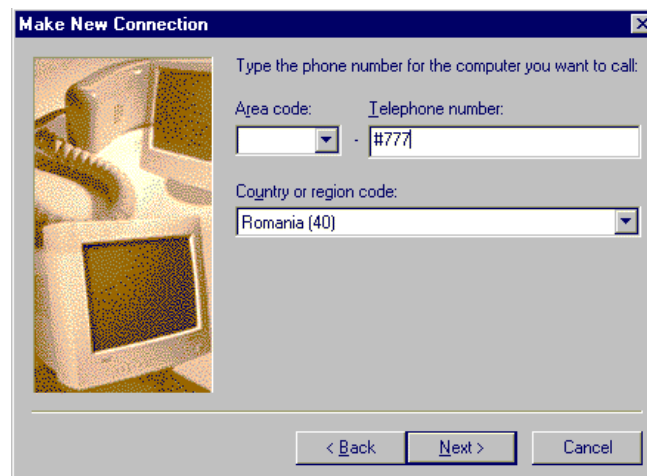
Selectati ca modem: Zapp CDMA Handset (Standard 115k serial).



Click Next



Numarul de telefon este: #777 (obligatoriu cu semnul #)
Country or region code: Romania (40)



Click next



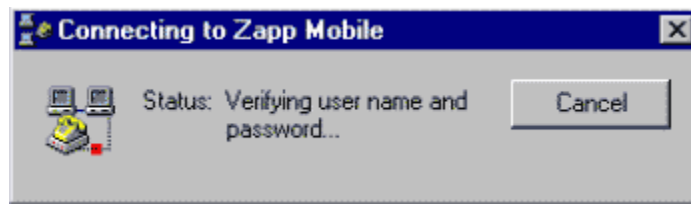
Click Finish.



Dublu click pe noua conexiune ("Zapp Mobile" in acest caz)



Folositi orice username/password.
Click connect.



In cateva secunde va fi stabilita conexiunea.