

Ghid de instalare

Z510 / Windows98 / Cablu USB Direct (Prolific)

Configurarea terminalului.....	1
Conectarea cablurilor	1
Instalarea Modemului Zapp (inclus in terminalul Zapp)	3
Stabilirea unei conexiuni Dia-Up cu rețeaua Zapp	7



Configurarea terminalului

Setarea modemului la viteza de 230K
Press Menu
Press 8
Press 2
Press 2
Select "Packet 230K" option
OK
Press Back
End

Conectarea cablurilor

Conectati telefonul in cablul USB. Conectati Cablul USB in PC
Va fi lansat un "wizard" de instalare pt noul periferic USB.



Click Next



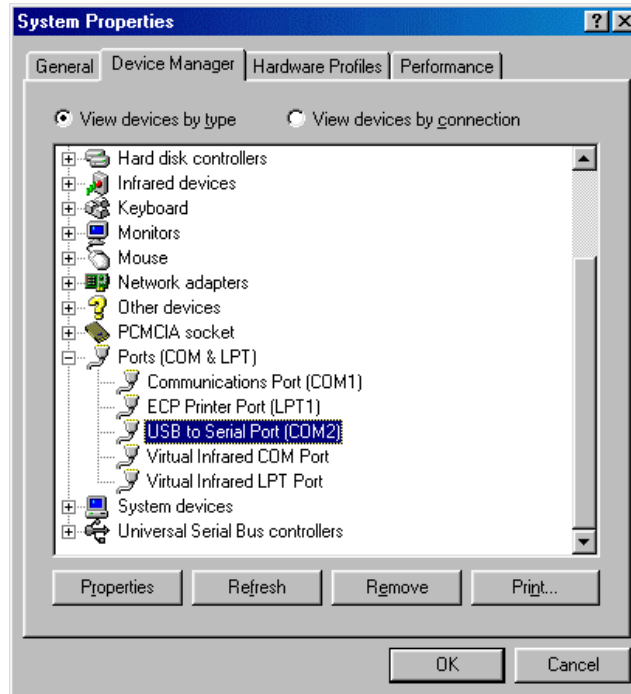
Selectati "Search for the best driver for your device". Click Next



Specificati locatia in care se afla diverul cablului USB.

Drivererele sunt disponibile si la adresa <http://www.zappmobile.ro/data>

In urma instalarii corecte veti vedea un nou port (COM) in Device Manager
My Computer > Control Panel > System > Device Manager > Ports (COM & LPT)

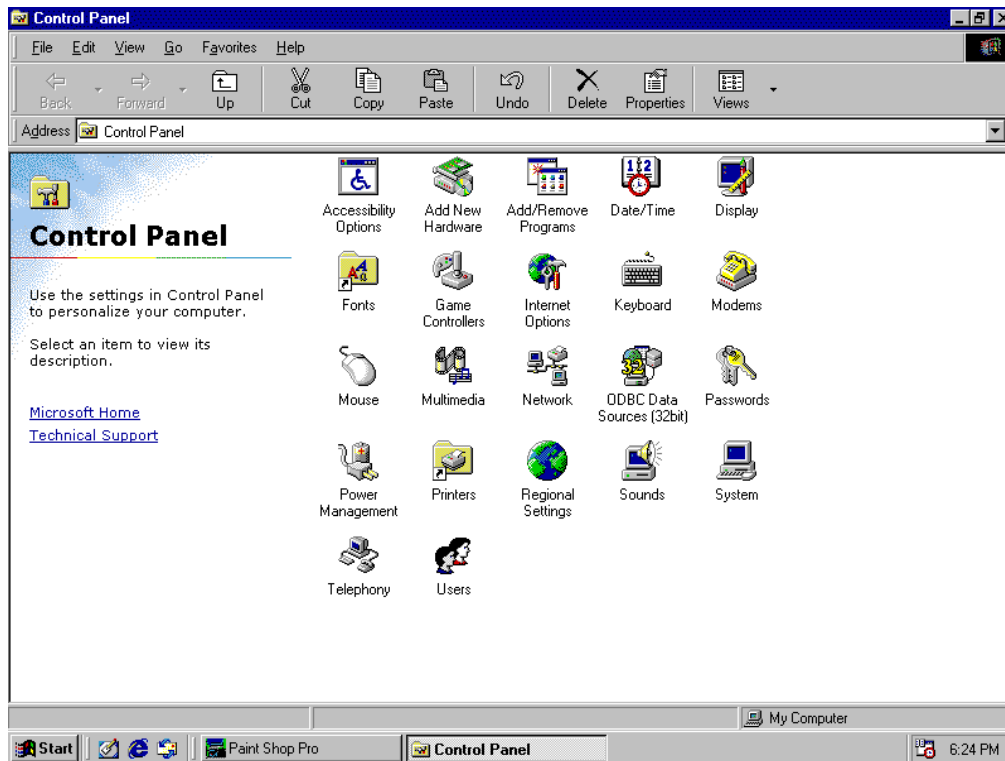
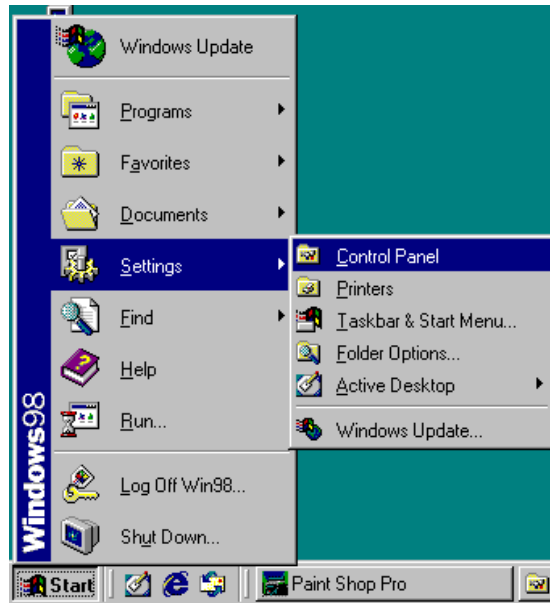


USB to Serial Port (COM*)

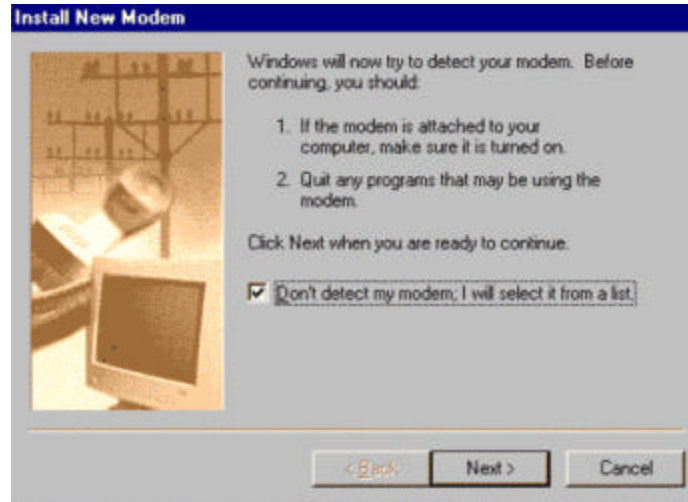
Instalarea Modemului Zapp (inclus in terminalul Zapp)

Pentru conectarea la Internet, terminalele Zapp sunt echipate cu un modem (inclus in telefon). Pentru a putea functiona, acesta trebuie sa fie instalat in sistemul de operare.

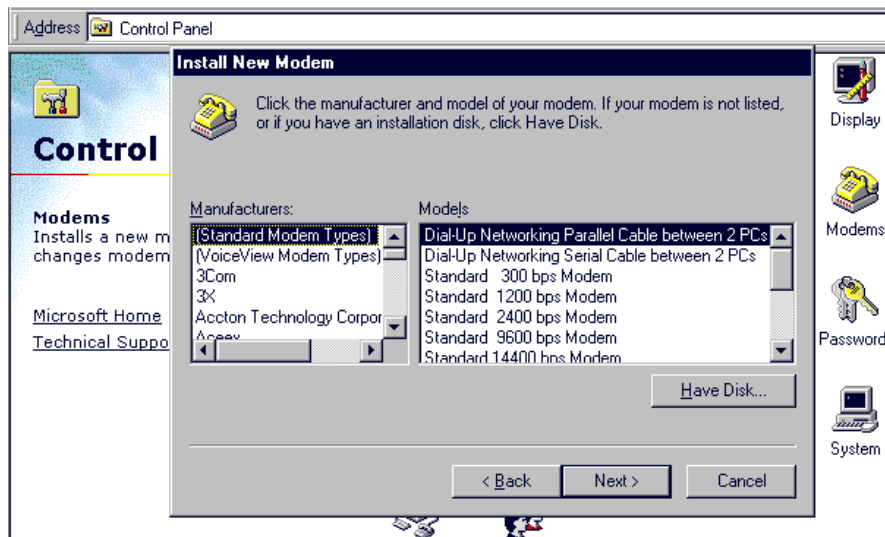
Dupa ce ati inchis toate aplicatiile (operatiune recomandata), click pe butonul Start.
Deschideti Control Panel.



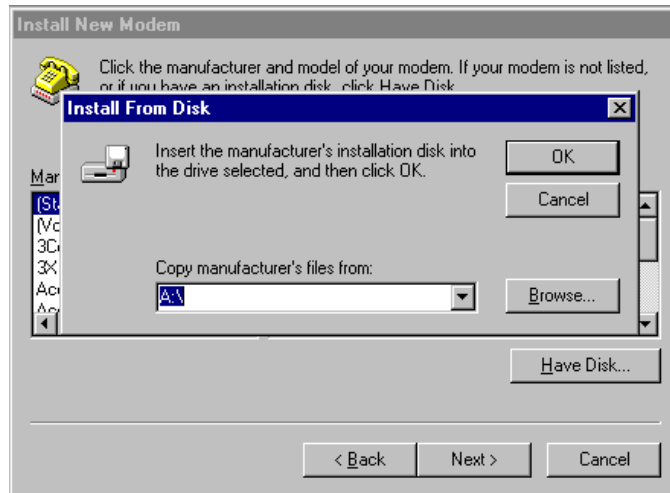
Dublu click pe "Modems"
Click "Add New Modem"



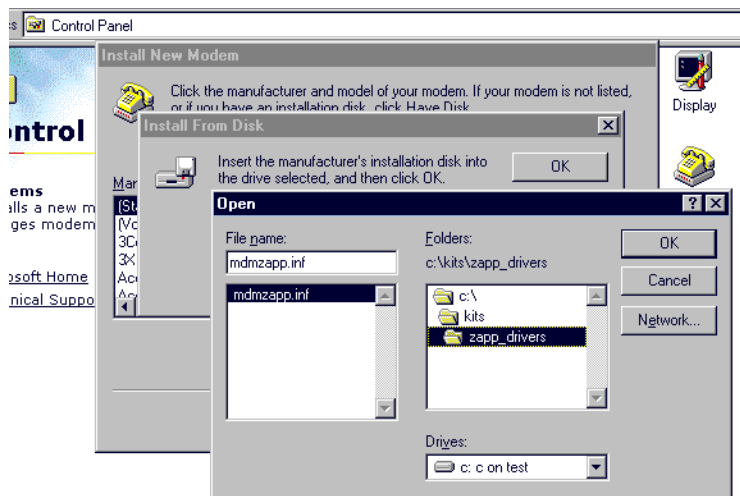
Selectati "Don't detect my modem; I will select it from a list"; click next;



Click: Have Disk



Click pe "Browse" pentru a indica locatia in care se afla driverul de modem (Zapp Modem).

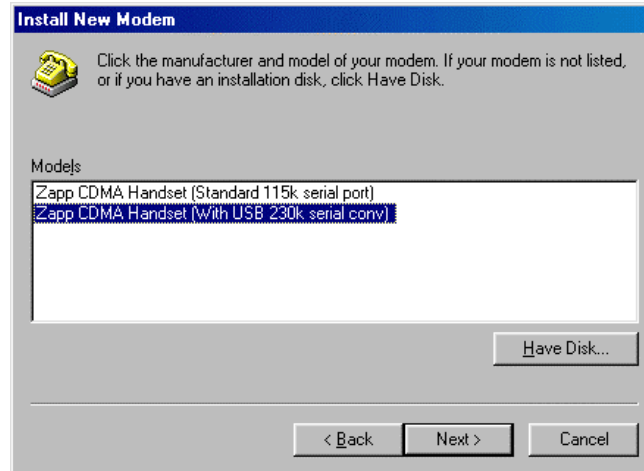


In cazul de fata fisierul cu driverele Zapp este mdmzapp.inf

Driverele Zapp pot fi copiate de la adresa:

<http://www.zappmobile.ro/data/drivers.html>

Selectati Zapp CDMA Handset (With USB 230k serial conv.) model

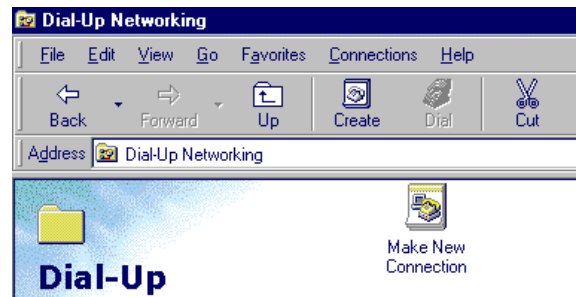


Click next

Selectati portul de comunicare asociat portului USB (in urma instalarii cablului/interfetei USB); EX: COM4
Click "Next"

Stabilirea unei conexiuni Dia-Up cu retea Zapp

Deschideti My Computer > Dial Up Networking

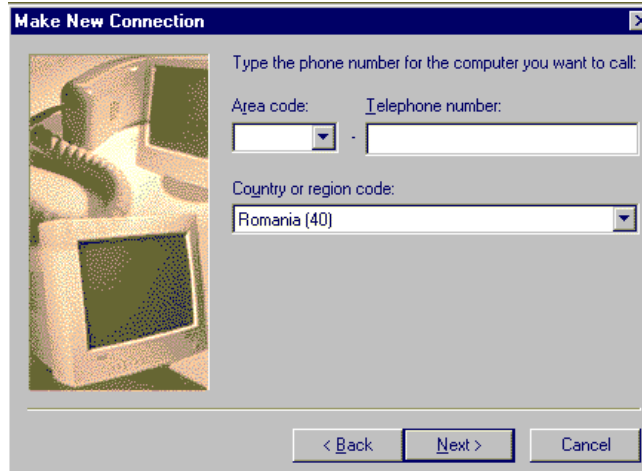


Make New Connection

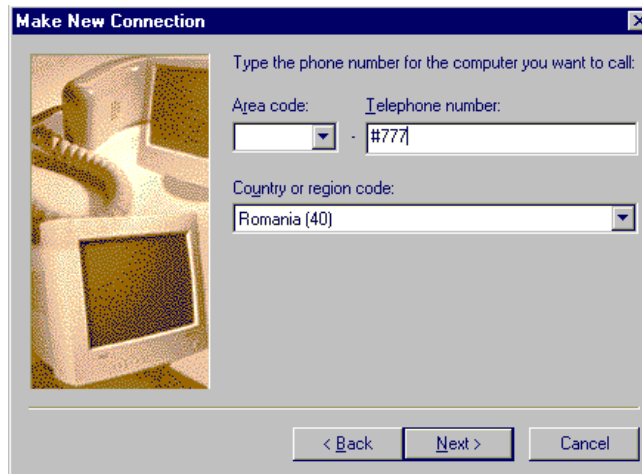
Scrieti un nume pentru noua conexiune (ex: "ZappMobile")

Selectati ca modem: Modem – Zapp CDMA Handset (With USB 230k serial conv)

Click Next



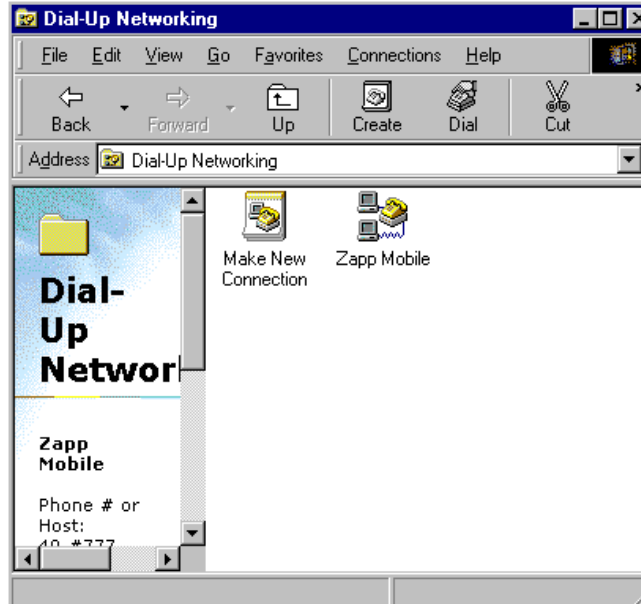
Numarul de telefon este: #777 (obligatoriu cu semnul #)
Country or region code: Romania (40)



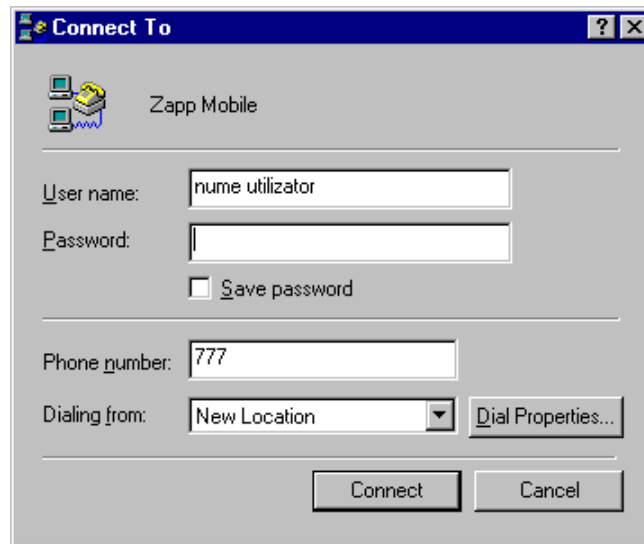
Click next



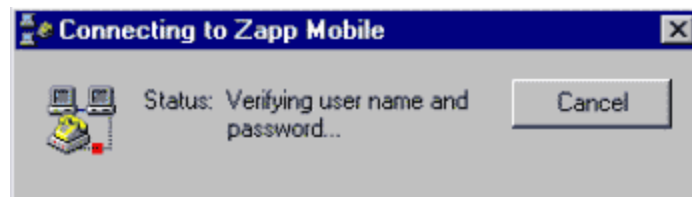
Click Finish.



Dublu click pe noua conexiune ("Zapp Mobile" in acest caz)



Folositi orice username/password.
Click connect.



In cateva secunde va fi stabilita conexiunea.

